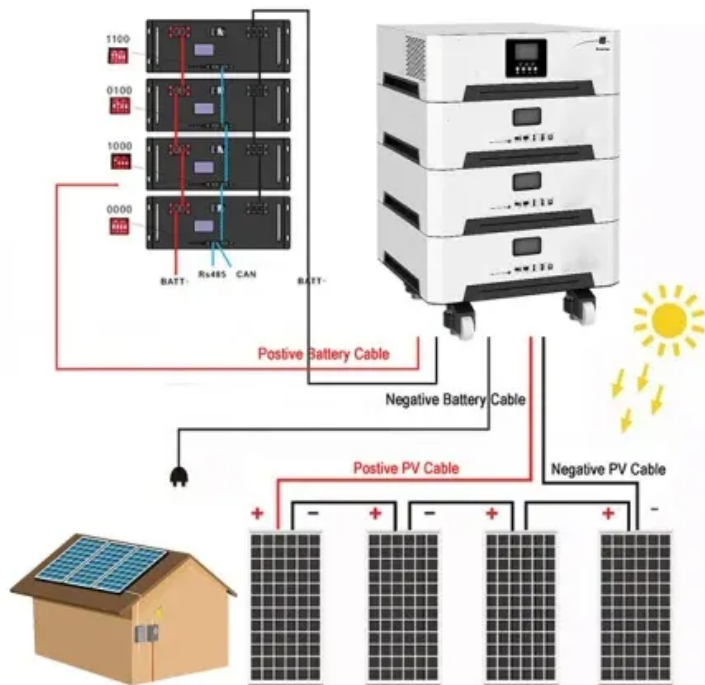


PDEOZE PowerContainer

250W microinverter



Overview

What is a solar microinverter reference design?

The Solar Microinverter Reference Design is a single stage, grid-connected, solar PV microinverter. This means that the DC power from the solar panel is converted directly to a rectified AC signal. This conversion is done by an interleaved flyback converter.

What is a dual stage 250 W microinverter?

This application note describes the design and performance of a dual stage 250 W microinverter characterized by maximum power point tracking and active and reactive power control capability. This is the main reason why the power conversion is based on a dual stage topology rather than the more common single-stage one.

What is a 215W solar microinverter reference design?

System designs can be standardized (hardware and software) to improve reliability and reduce costs. This Application Note presents and discusses Microchip's 215W Solar Microinverter Reference Design in detail. The Solar Microinverter Reference Design is a single stage, grid-connected, solar PV microinverter.

What is a M250 microinverter?

ase M250 MicroinverterThe Enphase Energy Microinverter System improves energy harvest, increases reliability, and dramatically simplifies design, installation, and management of solar power systems. The Enphase System includes the microinverter, the Enphase Envoy™, and Enphase Enlighten™ monitor.

What is a solar microinverter system?

The term, "microinverter", refers to a solar PV system comprised of a single low-power inverter module for each PV panel. These systems are becoming

more and more popular as they reduce overall installation costs, improve safety and better maximize the solar energy harvest. Other advantages of a solar microinverter system include:.

How much power does a solar microinverter support?

The solar microinverter is designed to support 215W out-put power at nominal input voltages (25 VDC-45 VDC). To ensure that the microinverter does not operate at an output power greater than 215W, a software clamp on the maximum allowable output current has been designed, based on the measured peak AC voltage.

250W microinverter

The Solar Microinverter Reference Design is a single stage, grid-connected, solar PV microinverter. This means that the DC power from the solar panel is converted directly to a rectified AC signal. This conversion is done by an interleaved flyback converter.

This application note describes the design and performance of a dual stage 250 W microinverter characterized by maximum power point tracking and active and reactive power control capability. This is the main reason why the power conversion is based on a dual stage topology rather than the more common single-stage one.

System designs can be standardized (hardware and software) to improve reliability and reduce costs. This Application Note presents and discusses Microchip's 215W Solar Microinverter Reference Design in detail. The Solar Microinverter Reference Design is a single stage, grid-connected, solar PV microinverter.

ase M250 Microinverter The Enphase Energy Microinverter System improves energy harvest, increases reliability, and dramatically simplifies design, installation, and management of solar power systems. The Enphase System includes the microinverter, the Enphase Envoy™, and Enphase Enlighten™ monitor.

The term, "microinverter", refers to a solar PV system comprised of a single low-power inverter module for each PV panel. These systems are becoming more and more popular as they reduce overall installation costs, improve safety and better maximize the solar energy harvest. Other advantages of a solar microinverter system include:

The solar microinverter is designed to support 215W output power at nominal input voltages (25 VDC-45 VDC). To ensure that the microinverter does not operate at an output power greater than 215W, a software clamp on the maximum allowable output

current has been designed, based on the measured peak AC voltage.

Nov 4, 2025 · Enphase M250 Microinverters simplify 240 VAC solar installation with no ground conductor needed, and integrate with other Enphase products for remote monitoring.

View STEVAL-ISV003V1 #1: 250W Solar Microinverter, MPPT reference design. Specifications, support documents, and additional tools available at DigiKey. The STEVAL-ISV003V1 is a ...

250 W microinverter for PV applications Key features: 250 W power capability Output voltage $V_{out} = 230V_{ac} 50Hz - 240V_{ac} 60Hz$ High conversion efficiency ($>94\%$, 93.5% CEC) MPPT ...

Apr 18, 2018 · Replus-250 The smart design of ReneSola's Micro Replus inverters improve solar PV harvesting and reliability. The Micro Replus System includes the micro-inverter, MRG ...

The Solar Microinverter Reference Design is a single stage, grid-connected, solar PV microinverter. This means that the DC power from the solar panel is converted directly to a ...

Nov 29, 2011 · The Solar Microinverter Reference Design is a single stage, grid-connected, solar PV microinverter. This means that the DC power from the solar panel is converted directly to a ...

Microinverter The Enphase Energy Microinverter System improves energy harvest, increases reliability, and dramatically simplifies design, installation, and management of solar power ...

View datasheets for 250 W Grid Connected Microinverter by STMicroelectronics and

other related components here.

Introduction This application note describes the implementation of a 250 W grid connected DC-AC system suitable for operation with standard photovoltaic (PV) modules. The design is ...

Replus-250 The smart design of ReneSola's Micro Replus inverters improve solar PV harvesting and reliability. The Micro Replus System includes the micro-inverter, MRG Communications ...

250W/500W Solar Micro-inverter Powerland Eonland
Microinverter, with industry-leading power density, efficiency and reliability, is the ...

Understanding the Benefits of a 250W Microinverter for Residential Solar Systems The evolution of solar technology has witnessed significant innovations designed to enhance energy ...

Enphase M250 Microinverters simplify 240 VAC solar installation with no ground conductor needed, and integrate with other Enphase products for remote monitoring.

Oct 9, 2020 · View datasheets for 250 W Grid Connected Microinverter by STMicroelectronics and other related components here.

Contact Us

For catalog requests, pricing, or partnerships, please visit:
<https://pdeozepv.pl>