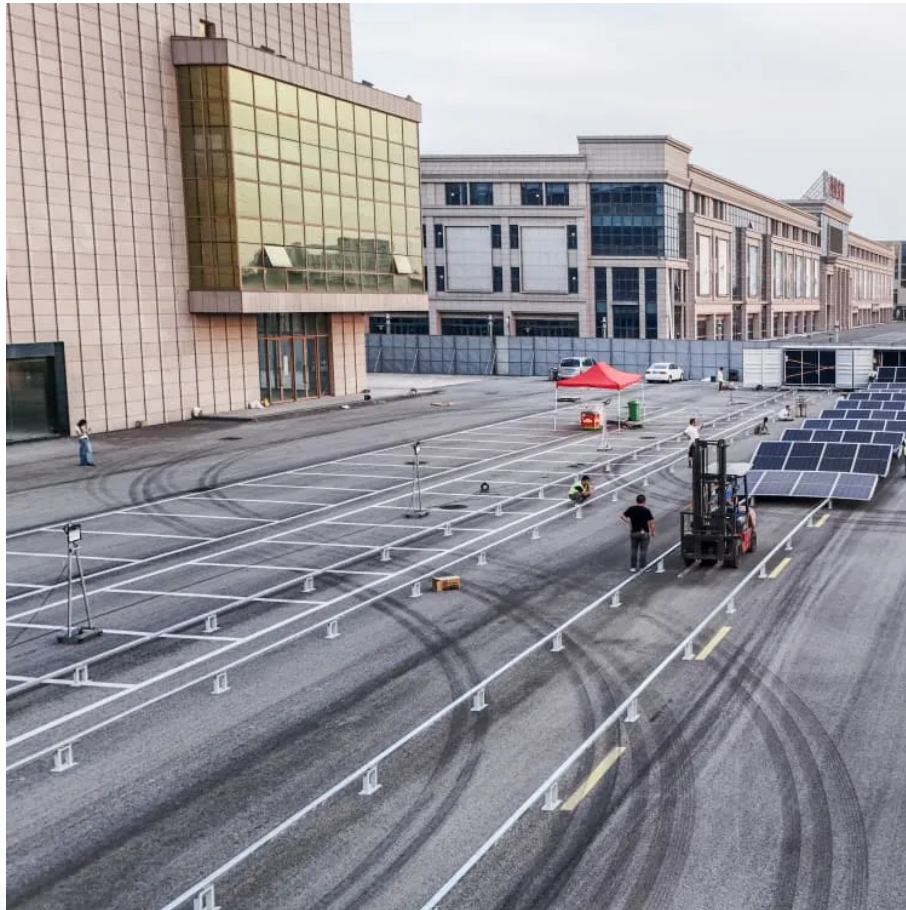


## PDEOZE PowerContainer

# AC distribution cabinet on the inverter side



## Overview

---

The ACDB (Alternative Current Distribution Box) receives the AC power from the solar inverter and directs it to AC loads through the distribution board. ACDB includes necessary surge protection device (SPD) and MCCB to protect the solar inverter from any type of damage or heavy.

The ACDB (Alternative Current Distribution Box) receives the AC power from the solar inverter and directs it to AC loads through the distribution board. ACDB includes necessary surge protection device (SPD) and MCCB to protect the solar inverter from any type of damage or heavy.

Application: Used on the DC side between solar panels and inverters.  
2. Distribution Box: Function: Distributes AC power from inverters to the grid or loads. Key Components: AC circuit breakers, surge protectors (SPD), RCCBs, and metering devices. Application: Installed on the AC side between.

PVB series PV combiner box is designed for solar off-grid system available with series of max VOC 150Vdc and 250Vdc. Wall-mounted, IP20, Suitable for systems with 6 units TBB inverters (5KW/6KW/8KW each) in parallel Provide three 125A fuses for connecting batteries or MPPT solar charge controllers.

The AC Distribution Box (ACDB), also called the AC Distribution Board, is a key part of an Electrical Distribution System. Its main job is to control and send out alternating current (AC) electricity from a main source to different circuits and devices in a building or installation. The ACDB makes.

The ACDB (Alternative Current Distribution Box) receives the AC power from the solar inverter and directs it to AC loads through the distribution board. ACDB includes necessary surge protection device (SPD) and MCCB to protect the solar inverter from any type of damage or heavy voltage. In Other.

GEESYS Team will configure the SJB based on the Inverter's and Solar PV modules technical specifications. Normally a GEESYS combiner box houses a series of TBs, fuses, the MCB & the SPDs. Additional Information: Yes! I am Interested Request A Callback Minimum Order Quantity: 1 Piece The main.

with the Conext XW series inverters. The Mini PDP can be used for managing power distribution to the XW inverter, MPPT Charge Controllers for charge controller DC breakers. Can be used for outputs of MPP with the Conext XW series inverters. The PDP can be used for managing power distribution for up to.

## AC distribution cabinet on the inverter side

---

In solar setups, the AC Distribution Box has a special job. Solar panels turn sunlight into direct current (DC) electricity. An inverter changes this DC power into alternating ...

The AC power distribution cabinet is an AC power distribution unit used to realize the functions of output, detection, display, and equipment protection of the inverter's output ...

The ACDB (Alternative Current Distribution Box) receives the AC power from the solar inverter and directs it to AC loads through the distribution board. ACDB includes necessary surge ...

Power Distribution Boxes encompass the following types: - AC Distribution Box: Manages the distribution of AC power. - DC Distribution Box: Handles the distribution of DC power. - PV Distribution Box: Specifically designed ...

Its main function is to distribute AC Power which is generated by Micro-inverter to the system and it includes the required Surge Protection Device (SPD) and MCB/MCCB to protect the Micro Inverter from any type of ...

Discover the ultimate flexibility in solar power management with our dual-mode On-Grid & Off-Grid Switch Cabinet. Our solution ensures optimal performance and reliability for your renewable ...

Elevate your power conversion solutions with Zekalabs AC-DC Inverter Cabinets, setting the standard for cutting-edge engineering. Meticulously designed to deliver unparalleled reliability, ...

ric Mini Power Distribution Panel The XW Mini Power Distribution Panel (Mini PDP) provides a compact, easy to install DC and AC power distribution cabinet compatible with the Conext ...

Its main function is to distribute AC Power which is generated by Micro-inverter to the system and it includes the required Surge Protection Device (SPD) and MCB/MCCB to protect the Micro ...

Choosing between a combiner box and distribution box depends on your system's DC/AC requirements, scale, and environmental conditions. Combiner boxes streamline PV ...

In solar setups, the AC Distribution Box has a special job. Solar panels turn sunlight into direct current (DC) electricity. An inverter ...

The ACDB (Alternative Current Distribution Box) receives the AC power from the solar inverter and directs it to AC loads through the distribution board. ACDB includes necessary surge protection device (SPD) and MCCB to ...

Choosing between a combiner box and distribution box depends on your system's DC/AC requirements, scale, and environmental conditions. Combiner boxes streamline PV string management, while ...

The AC power distribution cabinet is an AC power distribution unit used to realize the functions of output, detection, display, and equipment protection of the inverter's output power.

Power Distribution Boxes encompass the following types: - AC Distribution Box: Manages the distribution of AC power. - DC Distribution Box: Handles the distribution of DC power. - PV ...

It receives the AC power from the solar inverter and directs it to AC loads through the distribution board. We are dedicatedly involved in offering the wide range of ACDB Panel to our valuable ...

Discover the ultimate flexibility in solar power management with our dual-mode On-Grid & Off-Grid Switch Cabinet. Our solution ensures optimal performance and reliability for your renewable energy needs.

## Contact Us

---

For catalog requests, pricing, or partnerships, please visit:  
<https://pdeozepv.pl>