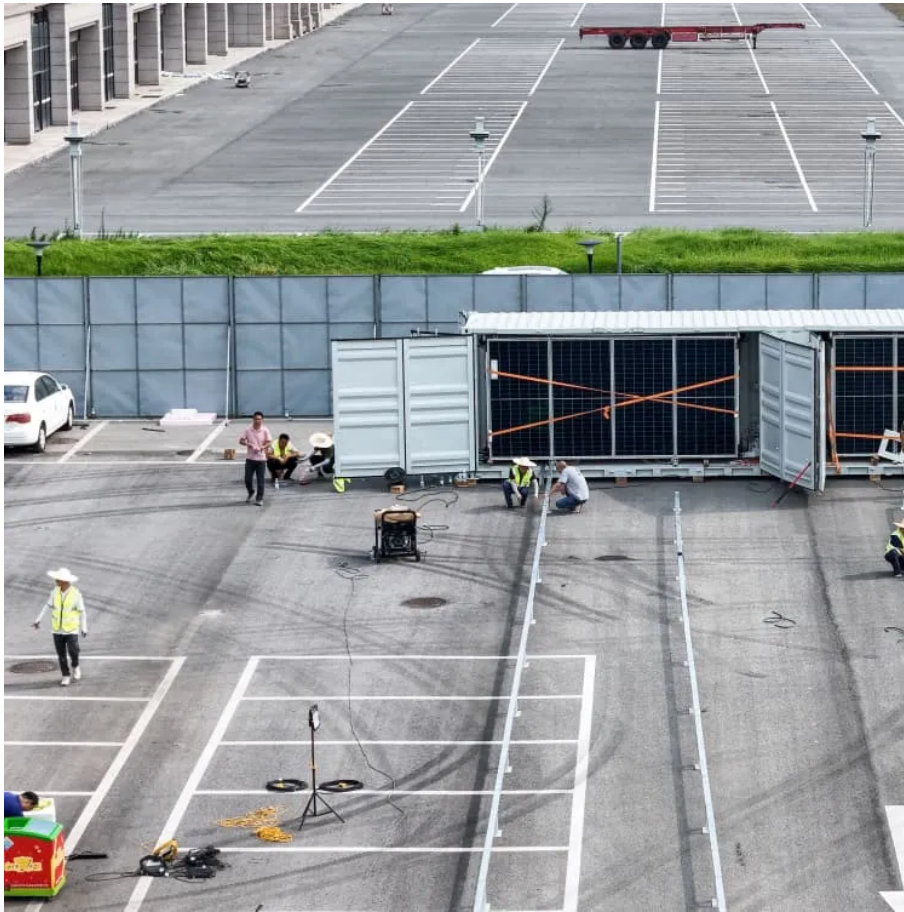


PDEOZE PowerContainer

Base station communication battery power supply



Base station communication battery power supply

During the day, the solar system powers the base station while storing excess energy in the battery. At night, the energy storage system discharges to supply power to the base station, ...

Our Telecom Base Station Battery Solutions are designed to provide reliable power support for Telecommunications base stations, ensuring continuous operation and optimal performance.

From lead-acid batteries to LiFePO₄ (replacement tide) is derived from the new requirements for the expansion and upgrade of the power supply in the field of communications storage.

Telecom batteries refer to batteries that are used as a backup power source for wireless communications base stations. In the event that an external power source cannot be ...

GEM Battery GF series communication base station lead-acid batteries are used for telecom communication backup power supply, support multi-channel parallel connection, good scalability, rack-mounted installation, longer life, ...

Communication base station backup batteries are designed to provide a consistent and reliable power supply during electricity outages. This ensures uninterrupted communication services, crucial for emergency situations or ...

This product has communication functions and can achieve multi - group parallel connection, providing a flexible and effective solution for the power supply systems of communication ...

GEM Battery GF series communication base station lead-acid batteries are used for telecom communication backup power supply, support multi-channel parallel connection, good ...

Communication base station backup batteries are designed to provide a consistent and reliable power supply during electricity outages. This ensures uninterrupted communication services, ...

The Power-Pac offers peace of mind for the system designer or base station operator. This unique power supply assures that a base station can remain up and running to power ...

Discover the 48V 100Ah LiFePO4 battery pack for telecom base stations: safe, long-lasting, and eco-friendly. Optimize reliability with our design guide.

Telecom batteries refer to batteries that are used as a backup power source for wireless communications base stations. In the event that an external power source cannot be used, the telecom battery can provide a ...

During the day, the solar system powers the base station while storing excess energy in the battery. At night, the energy storage system discharges to supply power to the base station, ensuring 24/7 stable communication.

Discover the 48V 100Ah LiFePO4 battery pack for telecom base stations: safe, long-lasting, and eco-friendly. Optimize reliability with our design guide.

From lead-acid batteries to LiFePO4 (replacement tide) is derived from the new requirements for the expansion and upgrade of the power supply in the field of ...

When natural disasters cut off power grids, when extreme weather threatens power

supply safety, our communication backup power system with intelligent charge/discharge management and ...

Contact Us

For catalog requests, pricing, or partnerships, please visit:
<https://pdeozepv.pl>