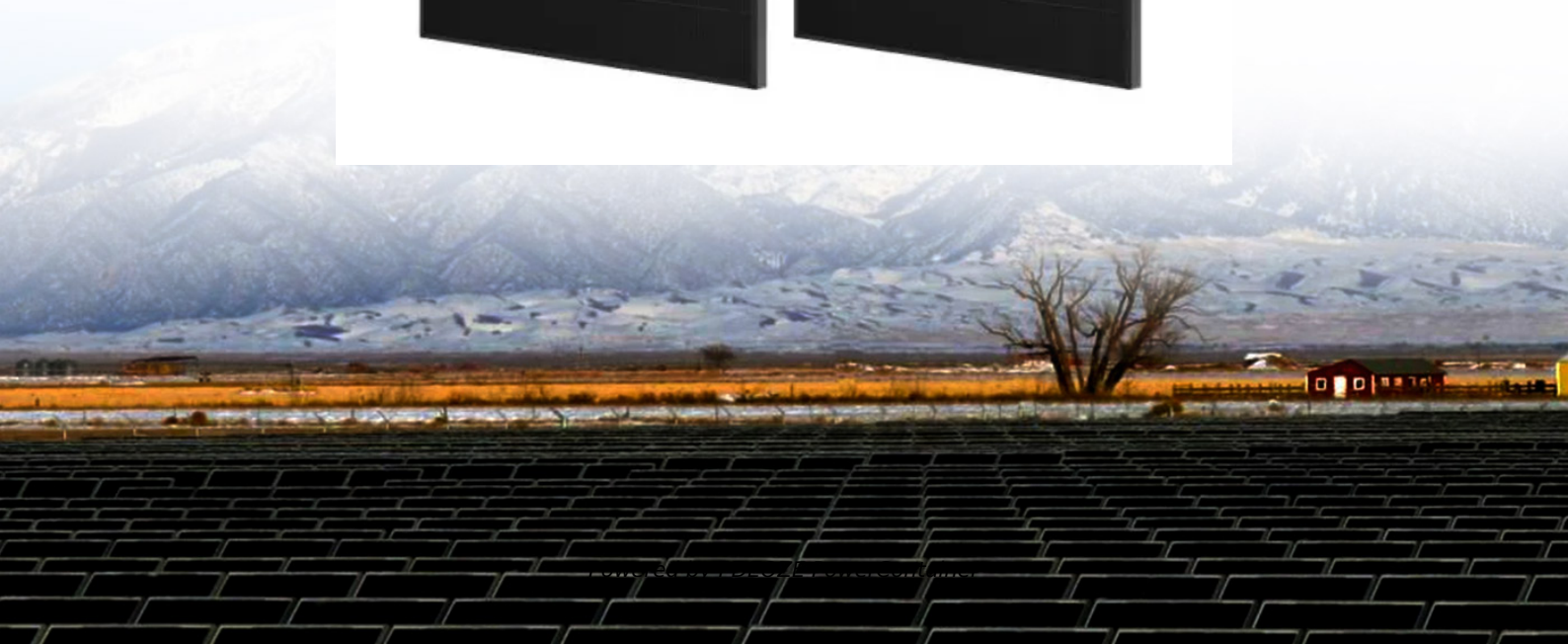
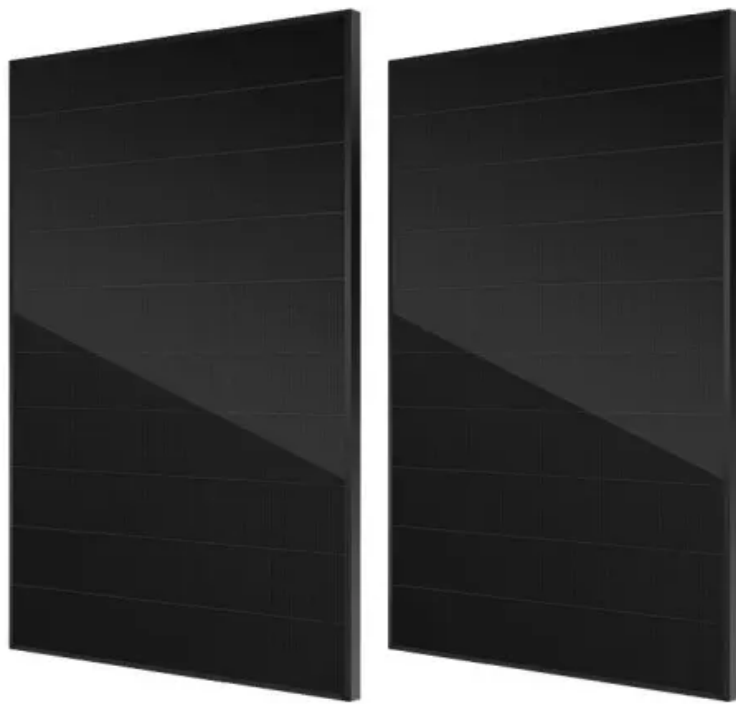


PDEOZE PowerContainer

Columbia Power Construction invests in energy storage power station project



Columbia Power Construction invests in energy storage power stati

Marked by metal cones and a clear-cut swath 20 feet wide, Alaska's border with Canada is one of the great feats of wilderness surveying.

For comparison, that's right ahead of the Columbia in area drained and right after it in discharge. (The Columbia River also needs Canada to gain its rank; its source is in British ...

Columbia Glacier, located about 40 kilometers (25 miles) west of Valdez near the epicenter of the great 1964 earthquake, is rapidly losing its battle for survival. It is the last of ...

Southern worms live in the British Columbia Coast Range, the Cascades of Washington and Oregon and the Olympic Mountains of western Washington. The southern ...

By glowing red on Sunday night, April 12, 1981, the heavens over the United States displayed their pleasure with the successful flight of the shuttle Columbia. Perhaps because ...

Columbia Glacier in Prince William Sound and Bering Glacier in the St. Elias Mountains are two glaciers losing ice at an alarming rate: during the past decade, Columbia ...

Early on the morning of December 19, 1980, a blood-red auroral arc suddenly appeared in the skies over British Columbia, Yukon Territory and Alaska.

Many glaciers smaller than about five square kilometers -- like those in the European Alps, New Zealand, Scandinavia and Glacier National Park in Montana -- will disappear by

the end of ...

The Alaska-Canada boundary was originally established in February 1825 by Russia (then owner of Alaska) and Great Britain (then owner of Canada).

The Columbia Glacier is one of Alaska's better known tidewater glaciers, both from the standpoint of tourist attraction and the model it provides for scientific investigation. In 1973 ...

Contact Us

For catalog requests, pricing, or partnerships, please visit:
<https://pdeozepv.pl>