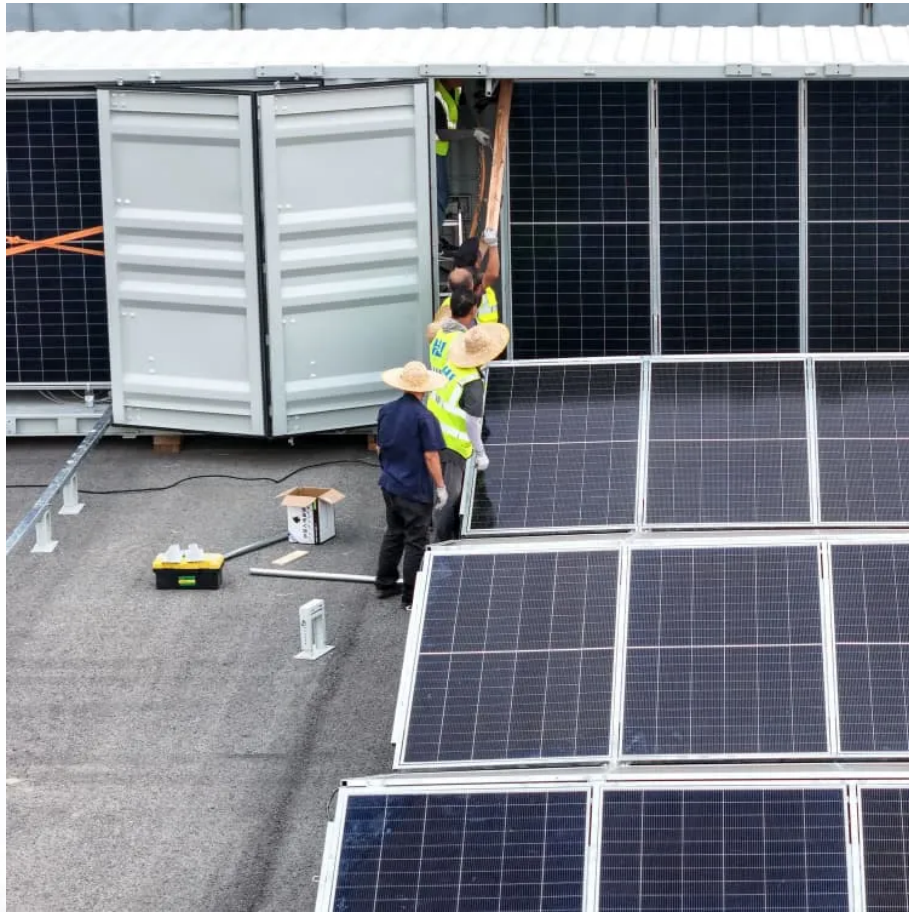


PDEOZE PowerContainer

Communication base station inverter provided by Laos



Communication base station inverter provided by Laos

In remote areas or islands where it is difficult to access the traditional power grid, the solar power supply system can provide stable power support for power and communication base stations, ...

Energy consumption is a big issue in the operation of communication base stations, especially in remote areas that are difficult to connect with the traditional power grid, ...

Container-type energy base station: It is a large-scale outdoor base station, which is used in scenarios such as communication base stations, smart cities, transportation, power systems ...

Container-type energy base station: It is a large-scale outdoor base station, which is used in scenarios such as communication base stations, smart cities, transportation, power systems ...

Power conversion and adaptation: The inverter converts DC power (such as batteries or solar panels) into AC power to adapt to the power needs of various communication ...

Energy consumption is a big issue in the operation of communication base stations, especially in remote areas that are difficult to connect with the traditional power grid, ...

Power supply for photovoltaic power generation system of Sino-European communication base station The communication base station installs solar panels outdoors, and adds MPPT solar ...

This paper proposes a novel ventilation cooling system of communication base station

(CBS), which combines with the chimney ventilation and the air conditioner cooling.

Unitel alone runs more than 9,000 base stations that give 83% 4G coverage, and the city forms the launch pad for 5G clusters. Reliable grid supply drawn from cross-border ...

Container-type energy base station: It is a large-scale outdoor base station, which is used in scenarios such as communication base stations, smart cities, transportation, power systems ...

This paper proposes a novel ventilation cooling system of communication base station (CBS), which combines with the chimney ventilation and the air conditioner cooling.

Unitel alone runs more than 9,000 base stations that give 83% 4G coverage, and the city forms the launch pad for 5G clusters. ...

Iran 5G communication base station inverter grid layout solution The emergence of ultra-dense 5G networks and a large number of connected devices will bring with them significant ...

Power conversion and adaptation: The inverter converts DC power (such as batteries or solar panels) into AC power to adapt to the power needs of various communication equipment. This is critical to ...

Laos communication base station lead-acid battery construction contract How many powerchina projects were completed in Laos in 2021?By the end of 2021, POWERCHINA had completed ...

Container-type energy base station: It is a large-scale outdoor base station, which is used in scenarios such as communication base stations, smart cities, transportation, power systems ...

Contact Us

For catalog requests, pricing, or partnerships, please visit:
<https://pdeozepv.pl>