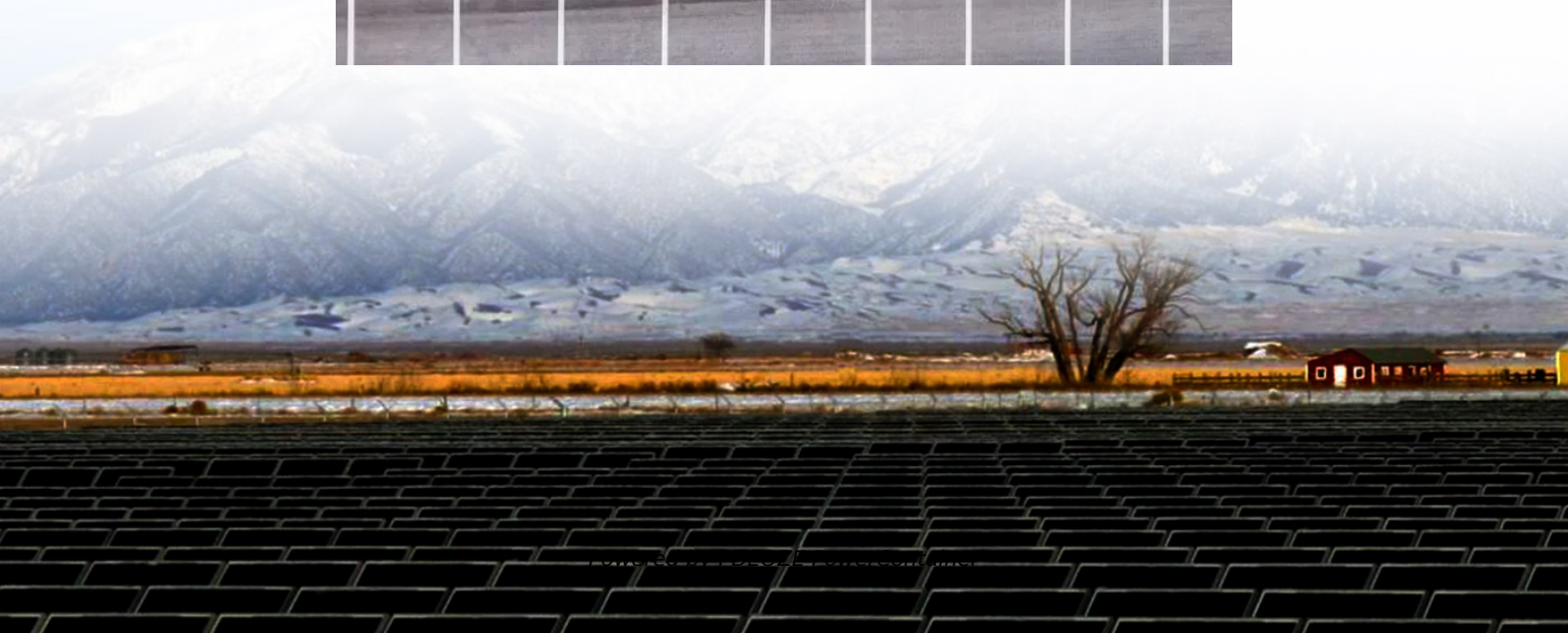
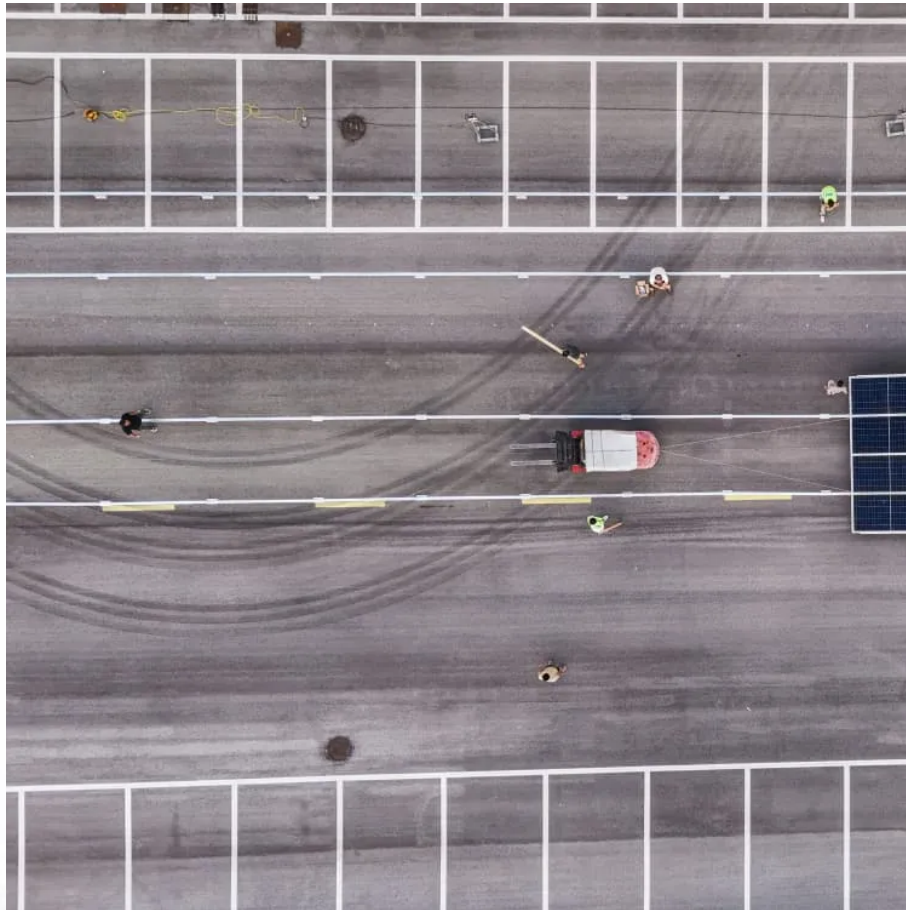


## **PDEOZE PowerContainer**

# **Communication base station lithium battery cells**



## Overview

---

The core hardware of a communication base station energy storage lithium battery system includes lithium-ion cells, battery management systems (BMS), inverters, and thermal management components. Lithium-ion cells are the energy reservoirs, storing electrical energy in chemical form.

## Communication base station lithium battery cells

---

In conclusion, telecom lithium batteries can indeed be used in 5G telecom base stations. Their high energy density, long lifespan, fast - charging capabilities, and ...

This comprehensive report provides an in-depth analysis of the global lithium battery market for communication base stations, a rapidly expanding sector driven by the proliferation of 5G ...

Lithium-ion telecom batteries cover the entire lifecycle of a base station, eliminating the need for mid-life replacement, significantly reducing maintenance costs.

Thanks to their high energy density, long service life, wide temperature adaptability, intelligent safety management, and minimal maintenance needs, EverExceed telecom base ...

Choosing the optimal lithium battery solutions for telecommunications and energy storage requires balancing power capacity, reliability, environmental conditions, and intelligent ...

Choosing the optimal lithium battery solutions for telecommunications and energy storage requires balancing power capacity, reliability, environmental conditions, and intelligent battery management.

The Communication Base Station Li-ion Battery market is experiencing robust growth, driven by the expanding global network infrastructure and the increasing demand for reliable power ...

Thanks to their high energy density, long service life, wide temperature adaptability, intelligent safety management, and minimal maintenance needs, EverExceed telecom base ...

The transition to lithium-ion (Li-ion) batteries in communication base stations is propelled by operational efficiency demands and environmental regulatory pressures.

Lithium-ion batteries, particularly Lithium Iron Phosphate (LiFePO<sub>4</sub>) batteries, dominate the market due to their superior energy density, longer lifespan, and improved safety features ...

The core hardware of a communication base station energy storage lithium battery system includes lithium-ion cells, battery management systems (BMS), inverters, and thermal ...

Advanced impedance spectroscopy shows lithium iron phosphate (LFP) cells maintain 92% capacity retention after 2,000 cycles - outperforming NMC variants in base station applications.

## Contact Us

---

For catalog requests, pricing, or partnerships, please visit:  
<https://pdeozepv.pl>