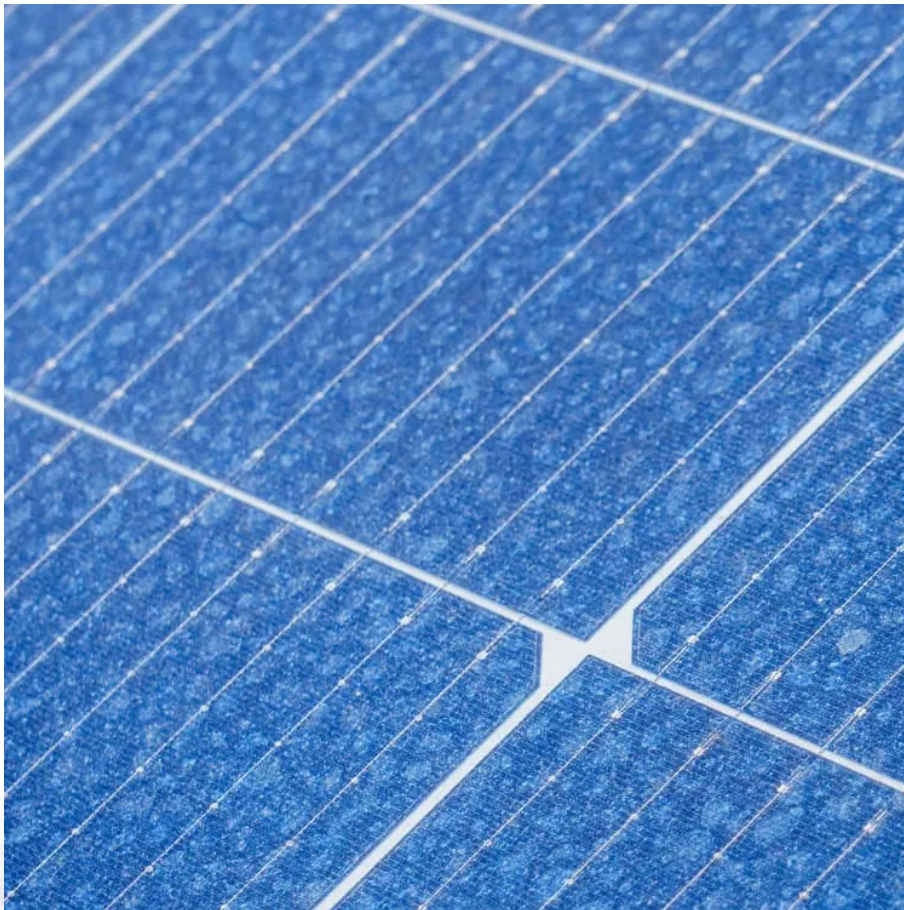


## **PDEOZE PowerContainer**

# **How high should the solar inverter be hung from the ground**



## Overview

---

In summary, you should be allowed to install an inverter with an integrated disconnect at a higher level if you provide an additional safety switch that is less than 6'-7" above the floor. A switch cannot be more than two meters (6-7") from the floor. Code is 404.8.

In summary, you should be allowed to install an inverter with an integrated disconnect at a higher level if you provide an additional safety switch that is less than 6'-7" above the floor. A switch cannot be more than two meters (6-7") from the floor. Code is 404.8.

One of the primary reasons experts stress about solar inverter placement is efficiency. Electricity traveling long distances through cables experiences resistance, causing voltage drop. That means if your inverter is placed too far from either the panels or the main switchboard, you're literally.

The placement of a solar inverter can impact its energy output by up to 25%. Solar inverters can be installed indoors or outdoors, but a shaded, well-ventilated spot is always recommended. Factors like cable distance, environmental conditions, safety, and accessibility should be considered when.

In summary, you should be allowed to install an inverter with an integrated disconnect at a higher level if you provide an additional safety switch that is less than 6'-7" above the floor. A switch cannot be more than two meters (6-7") from the floor. Code is 404.8. There's an exception (No. 2).

The decentralized solar energy inverters of SMA (Sunny Boys\* and Sunny Tripowers) all comply with the IP65 norm, which means they can be placed both indoor as outdoor without difficulty. When choosing the right spot, you have to consider a few things. In this article we offer some recommendations.

SolarEdge inverters can be installed indoors or outdoors, side by side, one above the other, or in a diagonal layout. To allow proper heat dissipation and prevent power reduction due to excessive temperature, ensure sufficient air circulation and maintain minimum clearance areas between the.

Options for your solar inverter location are crucial for optimal performance and longevity of your solar energy system. You need to consider factors such as accessibility for maintenance, proximity to the solar panels and electrical panel, as well as ventilation to prevent overheating. By ensuring.

## How high should the solar inverter be hung from the ground

---

They use photovoltaic (PV) technology to turn sunlight into direct current (DC) electricity which is then converted by a solar inverter into an alternating current (AC) that can be used to power ...

In this detailed guide, we will cover the best spots for solar inverters, why the position matters, and what to think about when picking a location. By the time you finish ...

With ground mounting, you can place your solar inverter at a lower height, which can be beneficial for easily reaching and maintaining the unit. This option allows for enhanced ventilation, as ground-mounted ...

For larger solar inverters or UPS systems, aim to place them as close to the home's distribution panel (breaker box) as possible. This ensures efficient integration into your ...

Inverter placement optimization is crucial for solar developers as it significantly enhances the performance and longevity of solar energy systems by ensuring that inverters ...

In summary, you should be allowed to install an inverter with an integrated disconnect at a higher level if you provide an additional safety switch that is less than 6'-7" ...

For larger solar inverters or UPS systems, aim to place them as close to the home's distribution panel (breaker box) as possible. This ensures efficient integration into your home's electrical network. Ideal ...

SolarEdge inverters can be installed indoors or outdoors, side by side, one above the other, or in a diagonal layout. To allow proper heat dissipation and prevent power reduction due to ...

For roof mounting, the clearance from the inverter to the bottom side of the PV module must be at least 30 mm (1.2 in). This will prevent the grounding bolt from damaging the PV module.

Inverter placement optimization is crucial for solar developers as it significantly enhances the performance and longevity of solar energy systems by ensuring that inverters are installed in optimal locations, ...

Most manufacturers recommend at least six inches of space on all sides and above the solar inverter, with 0.5-3 meters from the ground depending on potential flooding.

In this detailed guide, we will cover the best spots for solar inverters, why the position matters, and what to think about when picking a location. By the time you finish reading, you'll know exactly how to place ...

With ground mounting, you can place your solar inverter at a lower height, which can be beneficial for easily reaching and maintaining the unit. This option allows for enhanced ...

To avoid users of a building to be bothered by an inverter, it is advisable to hang the device on a spot where it doesn't cause nuisance; e.g. a garage, a shed, a basement or an ...

## Contact Us

---

For catalog requests, pricing, or partnerships, please visit:

<https://pdeozepv.pl>