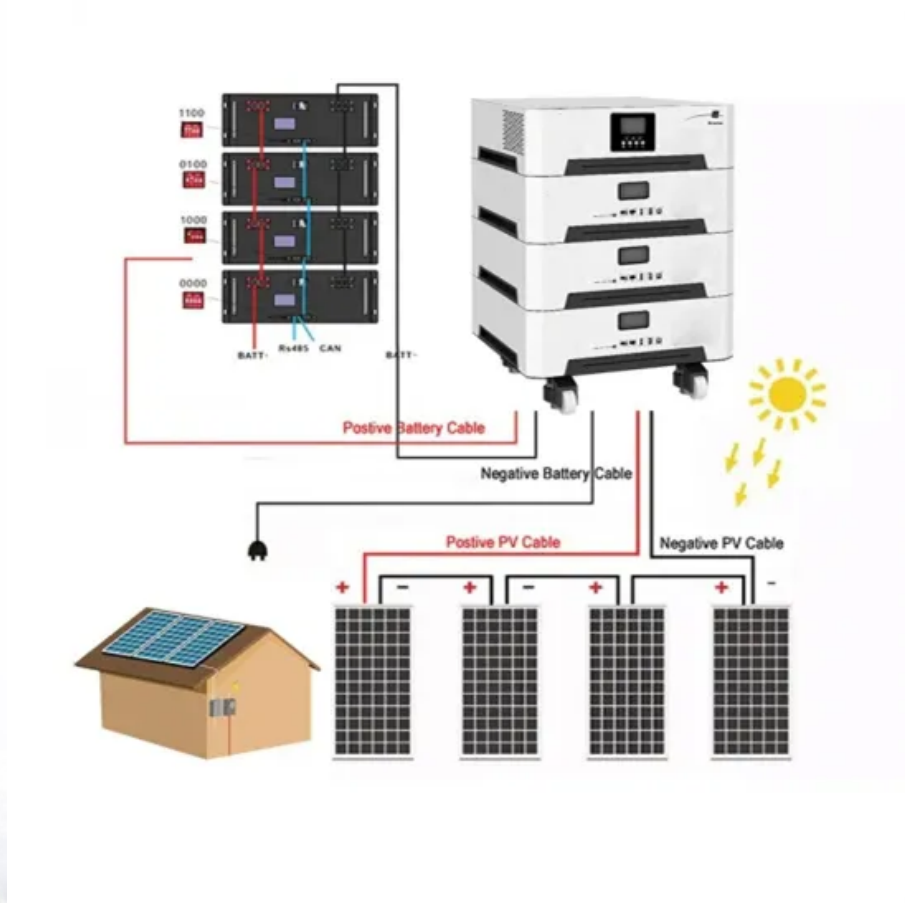


## PDEOZE PowerContainer

# How long does it take to replace the battery in a communication base station



## Overview

---

You will likely never need to replace your Base Station's batteries as they are rechargeable and meant to last. The Base Station takes four (4) 1.2V, 1300mAh nickel-metal hydride (NiMH) rechargeable batteries.

You will likely never need to replace your Base Station's batteries as they are rechargeable and meant to last. The Base Station takes four (4) 1.2V, 1300mAh nickel-metal hydride (NiMH) rechargeable batteries.

You will likely never need to replace your Base Station's batteries as they are rechargeable and meant to last. The Base Station takes four (4) 1.2V, 1300mAh nickel-metal hydride (NiMH) rechargeable batteries. Regular alkaline batteries should never be inserted into the Base Station, as they may.

SimpliSafe's base station is unique in that although it can still be connected to a power outlet, in the event of power failure, it can switch to its in-built rechargeable battery to keep the system running. According to SimpliSafe, the rechargeable battery can power the system for up to 24 hours.

If you have an ADT Total Security - TSSC - TS Base Station and the back up battery is low, you will want to replace it. You can purchase one here at this [link](#) and then watch this video to see how you replace it. more If you have an ADT Total Security - TSSC - TS Base Station and the back up.

Once installed in communication base stations, these batteries typically do not require replacement for several years. Therefore, it is crucial to enhance battery maintenance to improve its operational conditions, which in turn can effectively extend the battery's lifespan. Online battery.

During prolonged power outages, telecom base stations may need to transition to alternative power sources such as diesel generators or renewable energy systems. The UPS battery plays an integral role by maintaining power long enough for these systems to start up and stabilize. Additionally, in.

When is it Necessary to Replace Your Battery?

UPS batteries generally last about 3 - 5 years, but real service life depends on various factors, including temperature, voltage, maintenance, age, utility power quality, fully discharged time, and so on. There are three main conditions that may lead to.

## How long does it take to replace the battery in a communication ba

---

When designing a UPS battery system for a telecom base station, engineers must address several critical factors to ensure reliability, efficiency, and longevity. The first step in ...

Aside from the SimpliSafe base station and SimpliCam, SimpliSafe components require a periodic replacement of their batteries. In this article, you will learn more about ...

Once these batteries are installed and put into operation in a communication base station, they will not be replaced within a few years. Therefore, it is of great significance to ...

With the panel unplugged, unscrew the screw near where it says power on the back of the base station. Once there is no screw you can flip it over and pull the rear cover off. Then unscrew the

You will likely never need to replace your Base Station's batteries as they are rechargeable and meant to last. The Base Station takes four (4) 1.2V, 1300mAh nickel-metal hydride (NiMH) ...

When is it Necessary to Replace Your Battery? UPS batteries generally last about 3 - 5 years, but real service life depends on various factors, including temperature, voltage, maintenance, age, ...

With the panel unplugged, unscrew the screw near where it says power on the back of the base station. Once there is no screw you can flip it over and pull the rear cover off. Then unscrew the

When designing a UPS battery system for a telecom base station, engineers must address several critical factors to ensure reliability, efficiency, and longevity. The first step in designing a UPS system is to ...

Long Cycle Life LiFePO<sub>4</sub> batteries can achieve over 2,000 cycles, and in some cases up to 5,000 cycles, far surpassing the 300-500 cycles of lead-acid batteries. This ...

If there are no signs of corrosion, you will need to replace the batteries with 4 NiMH rechargeable batteries that meet the requirements of 1.2V and 1300 mAH Once you have your replacement ...

Once installed in communication base stations, these batteries typically do not require replacement for several years. Therefore, it is crucial to enhance battery maintenance ...

You will likely never need to replace your Base Station's batteries as they are rechargeable and meant to last. The Base Station takes four (4) 1.2V, 1300mAh nickel-metal hydride (NiMH) rechargeable batteries.

If there are no signs of corrosion, you will need to replace the batteries with 4 NiMH rechargeable batteries that meet the requirements of 1.2V and 1300 mAH Once you have your replacement batteries, use the steps outlined in ...

When is it Necessary to Replace Your Battery? UPS batteries generally last about 3 - 5 years, but real service life depends on various factors, including temperature, voltage, maintenance, age, ...

Long Cycle Life LiFePO<sub>4</sub> batteries can achieve over 2,000 cycles, and in some cases up to 5,000 cycles, far surpassing the 300-500 cycles of lead-acid batteries. This translates to lower replacement ...

We can replace those batteries with actual NiMH rechargeables at no cost! It's actually pretty simple. You have to remove the power cord which will reveal a single screw on ...

## Contact Us

---

For catalog requests, pricing, or partnerships, please visit:  
<https://pdeozepv.pl>