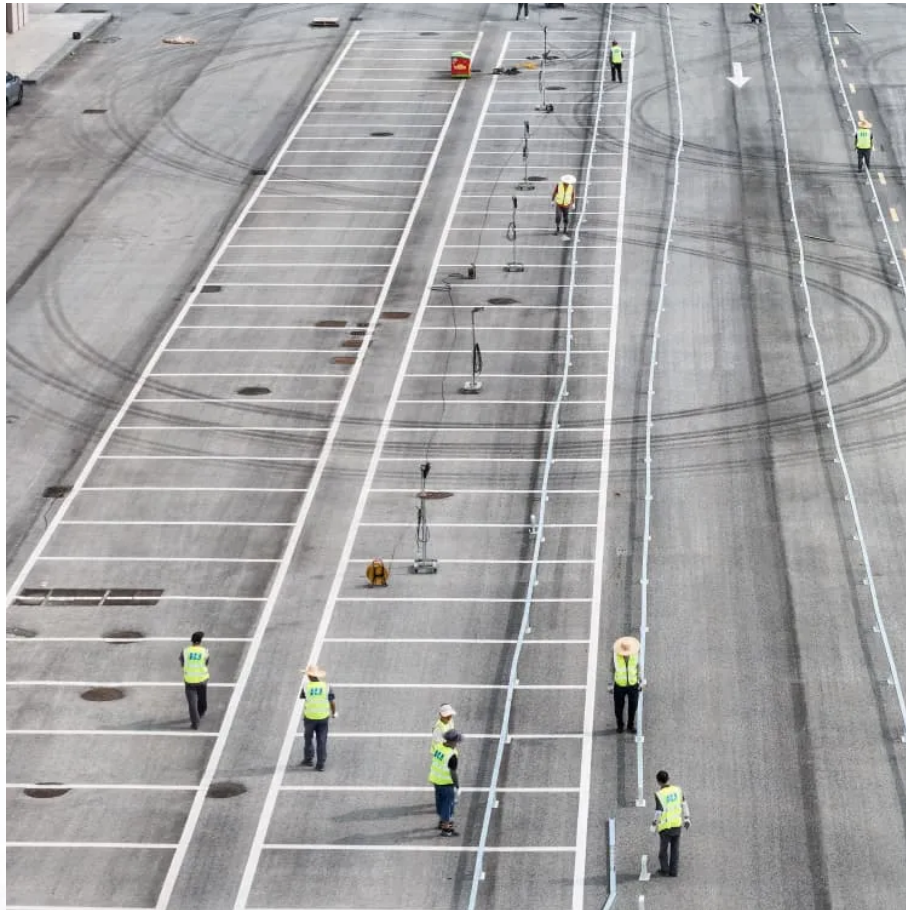


PDEOZE PowerContainer

Huawei Energy Storage Cabinet Update Battery Loss



Overview

What is Huawei smart string energy storage system?

With Huawei Smart String Energy Storage System, you can power your life by green power storage and be astonished by its admirable performance. No matter nights, rainy days or unexpected blackouts off the grid, the solar power is always at your request as a real bank. The built-in optimizer independently manages each battery module.

What should I do if my Huawei battery catches fire?

The detailed description is as follows: 1. If batteries emit smoke or catch fires, notify all household members to evacuate immediately. 2. After evacuating to a safe outdoor area (20 m away is recommended), call the fire department immediately. While waiting for the fire rescue, contact the installer and Huawei technical support. 3.

What if a Huawei ESS emits smoke or catches fire?

Issue 01 (2023-12-30) Copyright © Huawei Digital Power Technologies Co., Ltd. 34 LUNA2000 Energy Storage System Safety Information 7 Emergency Handling If a Huawei ESS emits smoke or catches fire, household members should not dispose of the ESS by themselves. Follow the processes in the flowchart below. The detailed description is as follows: 1.

What should I do if my Huawei XP catches a fire?

2. After evacuating to a safe outdoor area (20 m away is recommended), call the fire department immediately. While waiting for the fire rescue, contact the installer and Huawei technical support. 3. Firefighters arrive at the site and extinguish the fire.

Huawei Energy Storage Cabinet Update Battery Loss

With Huawei Smart String Energy Storage System, you can power your life by green power storage and be astonished by its admirable performance. No matter nights, rainy days or unexpected blackouts off the grid, the solar power is always at your request as a real bank. The built-in optimizer independently manages each battery module.

The detailed description is as follows: 1. If batteries emit smoke or catch fires, notify all household members to evacuate immediately. 2. After evacuating to a safe outdoor area (20 m away is recommended), call the fire department immediately. While waiting for the fire rescue, contact the installer and Huawei technical support. 3.

Issue 01 (2023-12-30) Copyright © Huawei Digital Power Technologies Co., Ltd. 34 LUNA2000 Energy Storage System Safety Information 7 Emergency Handling If a Huawei ESS emits smoke or catches fire, household members should not dispose of the ESS by themselves. Follow the processes in the flowchart below. The detailed description is as follows: 1.

2. After evacuating to a safe outdoor area (20 m away is recommended), call the fire department immediately. While waiting for the fire rescue, contact the installer and Huawei technical support. 3. Firefighters arrive at the site and extinguish the fire.

A maximum of three battery groups in up to six battery cabinets can be deployed inside the smart module. If many batteries are configured, they can be deployed outside the smart module.

If the manual ON/OFF switch is not working, you can turn on the Huawei BoostLi ESM-48100B1 lithium battery by supplying a DC voltage of 43.2-58 V to the power terminal on the front panel for at least 5 seconds.

SmartLi 2.0 is a self-developed battery energy storage system solution. It provides a cabinet-level battery management system and supports a maximum of 15 cabinets connected in parallel to ...

Individual optimization of each module allows for scalable mixed use of old and new battery packs. Each new battery will take full advantage of its capacity without loss. Your available energy for use can ...

Do not place a battery upside down or vertically, lay it on one side, or tilt it. Stack the batteries according to the stacking requirements on the packing cases.

This document describes routine maintenance, troubleshooting, and parts replacement of LUNA2000-97KWH-1H1, LUNA2000-129KWH-2H1, LUNA2000-161KWH-2H1, and LUNA2000 ...

If the manual ON/OFF switch is not working, you can turn on the Huawei BoostLi ESM-48100B1 lithium battery by supplying a DC voltage of 43.2-58 V to the power terminal on the front panel ...

Individual optimization of each module allows for scalable mixed use of old and new battery packs. Each new battery will take full advantage of its capacity without loss. Your ...

But here's the shocker: 60% of premature battery failures in commercial setups trace back to poor maintenance, according to 2024 data from the National Renewable Energy Laboratory (NREL).

After connecting the cables to the battery packs, bind the cables inside the cabinet. Connect the other ends of the cables after installing the rack controller.

In this section, the battery power control module refers to the Energy Storage Control Unit and the battery pack refers to the battery expansion module. Alarm severities are ...

This document describes the SmartLi 3.0 (long-term backup power) intelligent lithium battery cabinet (lithium battery cabinet for short) in terms of its overview, transportation, storage, ...

Contact Us

For catalog requests, pricing, or partnerships, please visit:
<https://pdeozepv.pl>