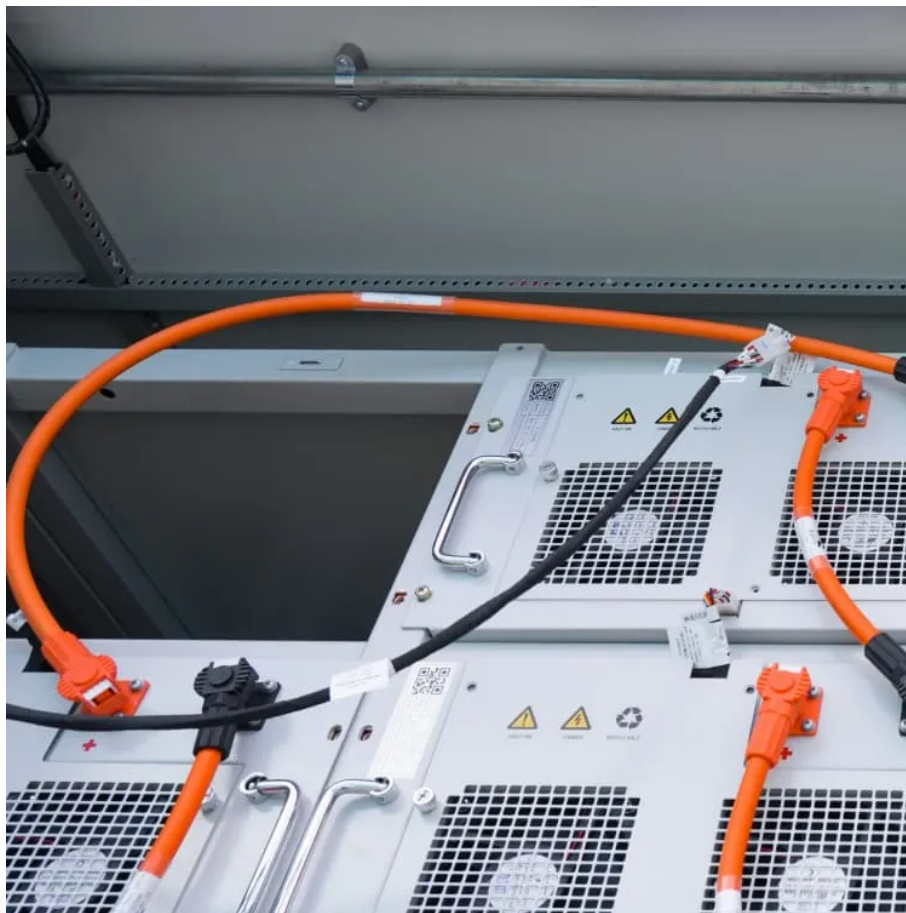


PDEOZE PowerContainer

Installation of double-glass light-transmitting components



Installation of double-glass light-transmitting components

MBCI's Light Transmitting Panels come in a kit with multiple components, allowing you to customize your project and craft a unique environment that meets your exact needs.

MBCI manufactures light transmitting panels for commercial building uses. Contact us today to learn more about our metal panel & accessories options!

This INSTALLATION MANUAL applies to installing, maintaining, and using the double glass and bifacial dual-glass solar modules manufactured by Hounen Solar Cambodia Inc or Hounen ...

Discover how light-transmitting components and double glass technologies are reshaping energy-efficient building designs and solar panel efficiency. This article explores their applications,

Key factors enabling superior light transmission: Double glass configurations use low-iron glass with iron content below 0.02%, compared to 0.05-0.1% in standard solar glass.

Follow the safety regulations for all other system components, including wires and cables, connectors, charging regulators, inverters, storage batteries, rechargeable batteries, etc.

Please be sure to learn about directives and permit requirements from the responsible local authorities and energy providers prior to installation of the solar plant.

Install and tighten the insertion profiles to the support structure using the hardware and instructions provided by the mounting system manufacturer. The system designer and

installer ...

The installation of the modules shall be strictly carried out by professional technicians. Please read this manual carefully before installation.

During Modules installation and routine maintenance, operators should follow all safety precautions in this manual and local regulations. If you have any questions, please contact our ...

Contact Us

For catalog requests, pricing, or partnerships, please visit:
<https://pdeozepv.pl>