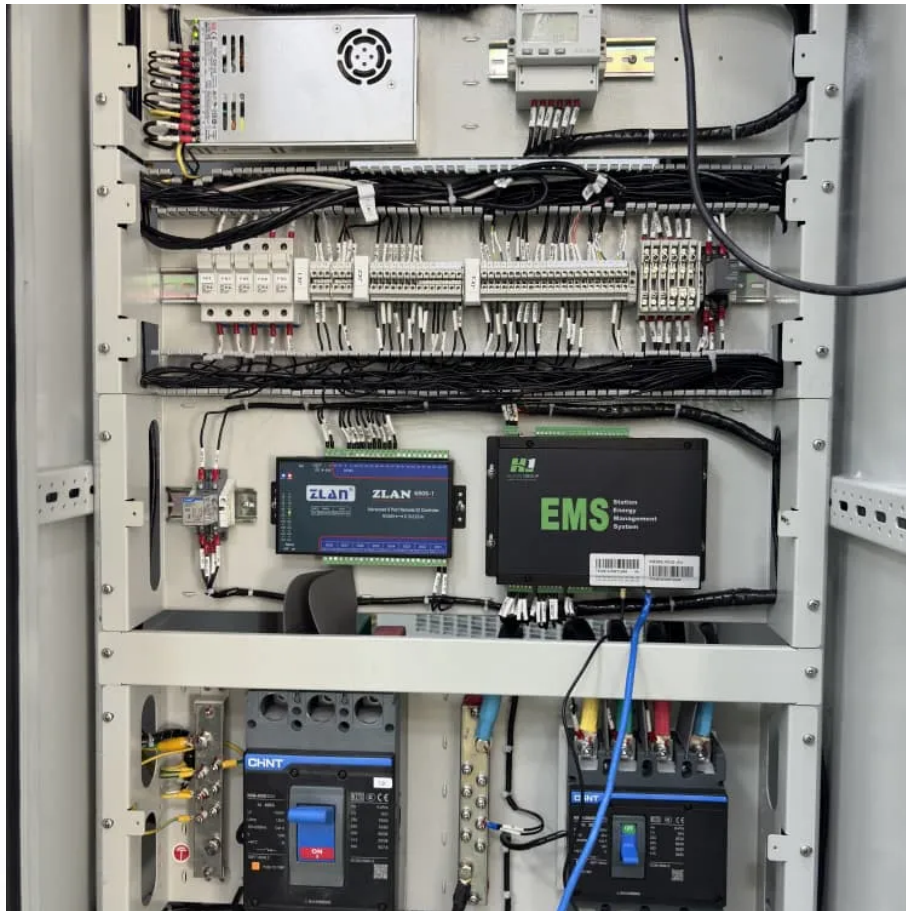


## PDEOZE PowerContainer

# Inverter maximum AC power



## Inverter maximum AC power

---

Simple math tells me that  $230V * 16.7A = 3871W$ . Does this mean that I can't use more than 3800 watts at a time from this inverter? You did the calculation for single-phase ...

In this article, we go over how to calculate the maximum power output of a power inverter. Power inverters are frequently used in off grid power systems in order to supply power to AC appliances.

Each inverter comes with a maximum recommended PV power, or sometimes is referred to as "DC-AC Capacity factor," which is defined as the percentage of DC power over the inverter's ...

Inverters are designed to generate AC output power up to a defined maximum which cannot be exceeded. The inverter limits or clips the power output when the actual produced DC power is ...

At maximum power, the power factor rating of the inverter is 0.8, this gives the ratio between the VA rating and the active power rating. So the inverter power rating depends on what your average power needs ...

Rated AC power output (V?A): This indicates the maximum AC power output from the inverter. Maximum continuous current out AC (A): This indicates the maximum continuous AC current ...

This is the maximum continuous AC that the inverter supplies. This value is typically used to determine the minimum current rating of the protection devices (breakers and fuses) and ...

We explain what nominal and maximum power are, their usage, and which one is more important when purchasing a DC/AC inverter

The Continuous Power rating of an inverter represents the maximum amount of power that the inverter is capable of supplying (Outputting). For example, a 3000 Watt inverter ...

At maximum power, the power factor rating of the inverter is 0.8, this gives the ratio between the VA rating and the active power rating. So the inverter power rating depends on ...

Simple math tells me that  $230V * 16.7A = 3871W$ . Does this mean that I can't use more than 3800 watts at a time from this inverter? You did the calculation for single-phase electricity, but this ...

Since the specification sheet for the inverter was not included in your post, this is a bit of a generic answer. Max AC output would typically refer to the maximum CONTINUOUS ...

We explain what nominal and maximum power are, their usage, and which one is more important when purchasing a DC/AC inverter

## Contact Us

---

For catalog requests, pricing, or partnerships, please visit:  
<https://pdeozepv.pl>