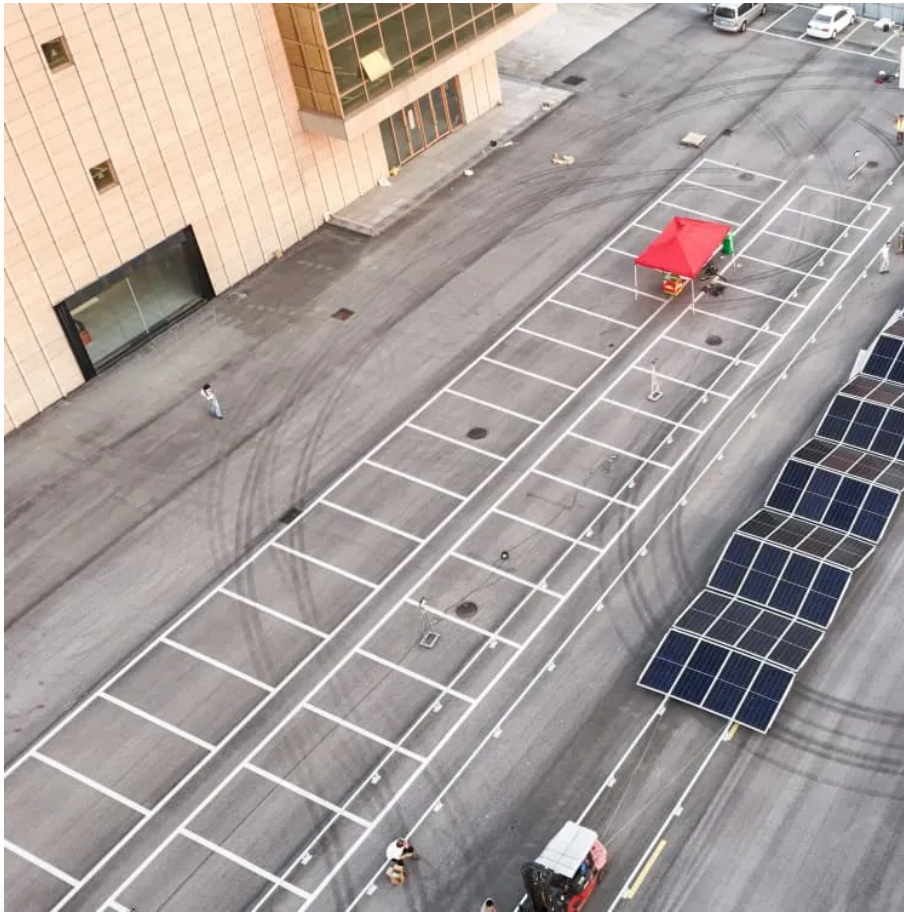


## **PDEOZE PowerContainer**

# **KWh and Ampere-hour energy storage batteries**



## KWh and Ampere-hour energy storage batteries

---

This battery kWh calculator converts your labeled voltage and capacity (Ah) into chemistry-correct kWh--so "ah to kwh" is fast, accurate, and apples-to-apples.

Understanding kilowatt-hour (kWh) and amp-hour (Ah) is essential for solar systems and electric appliances. By evaluating the battery capacity in kWh or Wh, you can determine the appropriate solar generator for your needs.

In this article, we'll help you convert Ah to Kwh by teaching you the necessary formulas and how a battery Kwh calculator can help with better energy planning.

Understanding kilowatt-hour (kWh) and amp-hour (Ah) is essential for solar systems and electric appliances. By evaluating the battery capacity in kWh or Wh, you can determine the ...

Discover the key differences between power and energy capacity, the relationship between Ah and Wh, and the distinctions between kVA and kW in energy storage systems.

When discussing energy storage systems, you'll often hear two units thrown around like confetti at a renewable energy conference: kWh (kilowatt-hour) and Ah (ampere-hour). But here's the ...

Amp-Hours (Ah) measure a battery's charge capacity, showing how much current it can deliver over time, critical for calculating runtime in solar systems. Watt-Hours (Wh) or Kilowatt-Hours ...

In this blog, we break down key solar battery specifications like volts, amps, and watts, explain what amp-hours are, how they compare to kilowatt-hours, and other essential ...

Converting kilowatt-hours (kWh) to ampere-hours (Ah) allows you to understand how much electrical charge a battery stores or supplies over time, crucial for battery sizing and ...

Ampere-hour (Ah) measures your battery's charge. It's the charge moved by one ampere in one hour. Kilowatt-hour (kWh), on the other hand, shows energy used or made at ...

In this blog, we break down key solar battery specifications like volts, amps, and watts, explain what amp-hours are, how they compare to kilowatt-hours, and other essential solar battery specs to check when ...

This battery kWh calculator converts your labeled voltage and capacity (Ah) into chemistry-correct kWh--so "ah to kwh" is fast, accurate, and apples-to-apples.

Converting Ah to kWh is a straightforward yet essential calculation for anyone working with solar batteries, backup systems, or off-grid energy solutions. By knowing your ...

In this article, we'll help you convert Ah to Kwh by teaching you the necessary formulas and how a battery Kwh calculator can help with better energy planning.

Converting kilowatt-hours (kWh) to ampere-hours (Ah) allows you to understand how much electrical charge a battery stores or supplies over time, crucial for battery sizing and energy management.

## Contact Us

---

For catalog requests, pricing, or partnerships, please visit:  
<https://pdeozepv.pl>