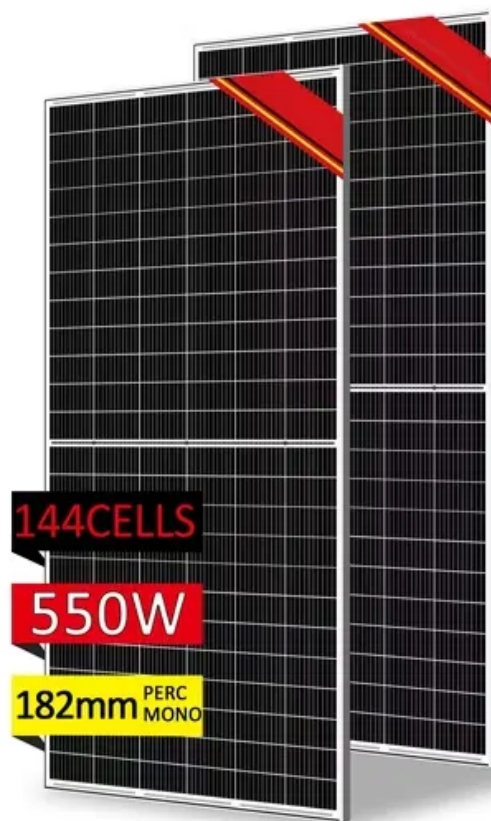


PDEOZE PowerContainer

Low voltage input solar inverter



Low voltage input solar inverter

It delivers up to 200% PV oversizing and 110% AC output, ensuring high efficiency and flexibility. The X3-NEO-LV offers IP65 protection, built-in SPD, and optional AFCI for safety. ...

You'll learn what high-voltage and low-voltage inverters do, how they work, and where each type is best used. We'll also talk about the benefits and drawbacks of each, along ...

120 / 240 Split Phase AC Output? 12KW watts low frequency power inverter with transformer, 36kW watts Peak, 48 volts DC ...

Low voltage and high current means you need to spend more on copper/cables. Going for a higher voltage saves money on copper up until you reach issues with cable ...

This article will discuss the definition, function, and applications of low voltage inverters, especially in renewable energy systems such as solar power.

With max. 15A DC input current per string, the LVSMT Series is compatible with different types of high-power modules, which ensures more solar power absorption, making it one of the most productive inverters on the market.

It delivers up to 200% PV oversizing and 110% AC output, ensuring high efficiency and flexibility. The X3-NEO-LV offers IP65 protection, built-in SPD, and optional AFCI for safety. Economically, it supports high-power solar ...

In this comprehensive exploration, we will delve into the nuances of the start-up voltage

for solar inverters, unraveling terms like input voltage, operating voltage, minimum ...

The Megarevo R5KLNA 5kW Split Phase Hybrid Inverter is designed to use in both Grid-Tie and Off-Grid solar systems. With a 5kW rated output and 7.5kW maximum PV input, it perfectly ...

With max. 15A DC input current per string, the LVSMT Series is compatible with different types of high-power modules, which ensures more solar power absorption, making it one of the most ...

Solis Three Phase low Voltage Energy Storage Inverters / Supports PV input up to 200% of the inverter's rated DC power, maximising solar utilisation / Supports up to 21A PV input current, compatible with the latest high ...

Each inverter has a minimum input voltage value that cannot trigger the inverter to operate if the PV voltage is lower than what is listed in the specification sheet.

120 / 240 Split Phase AC Output?12KW watts low frequency power inverter with transformer, 36kW watts Peak,48 volts DC input. The inverter is split-phase and will ...

Solis Three Phase low Voltage Energy Storage Inverters / Supports PV input up to 200% of the inverter's rated DC power, maximising solar utilisation / Supports up to 21A PV input current, ...

Contact Us

For catalog requests, pricing, or partnerships, please visit:
<https://pdeozepv.pl>