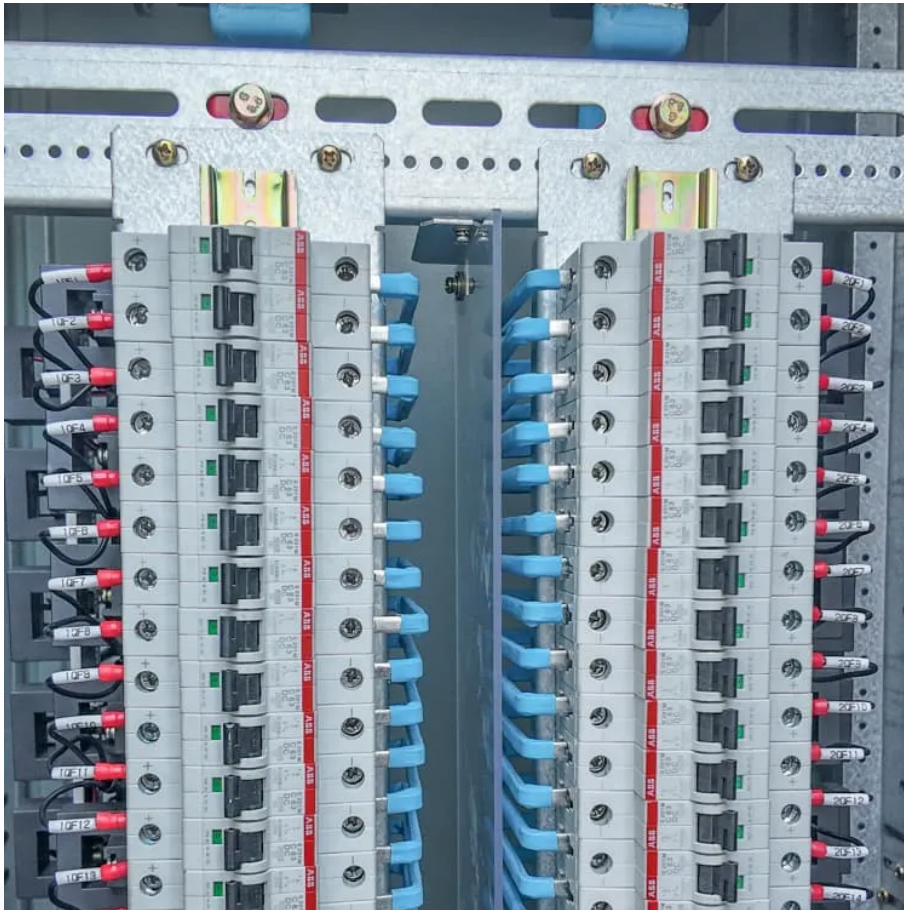


## PDEOZE PowerContainer

# Outdoor base station equipment installation



## Outdoor base station equipment installation

---

This is the third of a series of articles dealing with how to correctly set up a base station. This article provides details on how to handle the physical installation of the base station setup.

This document covers the installation of the Outdoor Base Station in a variety of situations. It supplements the installation documentation for the Spectralink 6000 System using either the ...

The outdoor enclosure is mounted into position and the Base Station is then installed within it. The entire unit is then referred to as an Outdoor Base Station. This document covers the ...

After connecting and powering up the Base Station, refer the Conduit Base Station IP67 Getting Started Guide (S000665) and related documentation available at ...

This is the third of a series of articles dealing with how to correctly set up a base station. This article provides details on how to handle the physical installation of the base station setup.

Learn to set up a base station CB radio for long-range communication. Explore key components and expert tips for clear, reliable signals.

A semi-permanent or permanent base station helps to eliminate the types of error that can result from repeated daily setups, and ensures that you always use the GNSS antenna at the exact ...

A semi-permanent or permanent base station helps to eliminate the types of error that can result from repeated daily setups, and ensures that you always use the GNSS antenna at the exact original location.

This guide will walk you through the basic understanding of Base Station CB System, how to install them and how to do that right

This chapter details how to install the base station Outdoor Unit (ODU). Before beginning the process, review the preinformation in Chapter 3.

This guide will walk you through the basic understanding of Base Station CB System, how to install them and how to do that right

Installing a Gateway or Base Station y or Base Station requires the same steps. The only difference is for a gateway using the antenna mounted to the enclosure

Guide to installing the standard EPRI RF monitor base station on a pole structure.

## Contact Us

---

For catalog requests, pricing, or partnerships, please visit:  
<https://pdeozepv.pl>