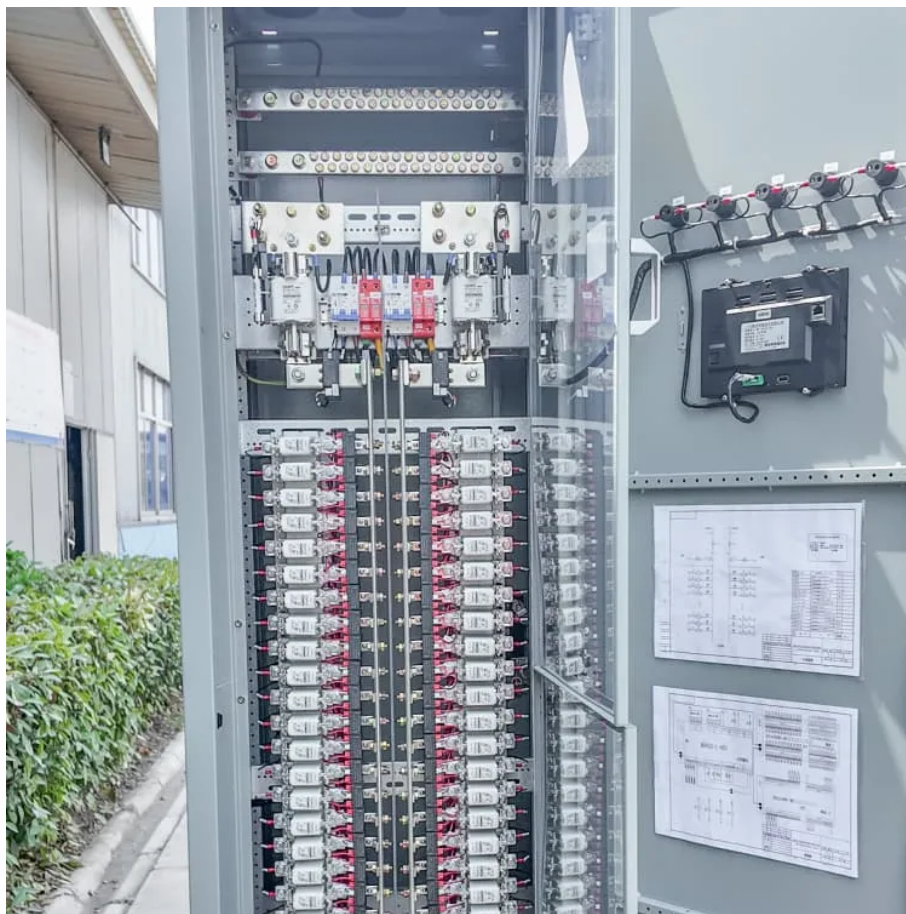


PDEOZE PowerContainer

Power module in solar inverter



Power module in solar inverter

Learn the basics of what an IGBT power module is, what it does and how it works.

All the main parts of a solar power inverter work together to convert and manage energy effectively. These components are listed below. This is where the solar panels, which are ...

In a large-scale utility plant or mid-scale community solar project, every solar panel might be attached to a single central inverter. String inverters connect a set of panels--a string--to one inverter.

Solar modules, specifically a solar panel with inverter, function as the main tools that capture sunlight and transform it into electricity, a process essential for homeowners ...

Module-level power electronics are devices that can be incorporated into a solar PV system to improve its performance in certain conditions (especially where shade is present) and to achieve a number of other solar design ...

Solar power is more than just panels on a roof -- at the heart of every efficient solar system lies a device quietly doing the heavy lifting: the solar inverter. If you've ever asked yourself, "how ...

Discover the key components of modern solar inverters, from SiC/GaN switching devices and MPPT technology to safety standards and hybrid designs. Learn how string inverters, ...

Solar modules, specifically a solar panel with inverter, function as the main tools that

capture sunlight and transform it into electricity, a process essential for homeowners seeking to adopt sustainable power solutions.

Solar power is more than just panels on a roof -- at the heart of every efficient solar system lies a device quietly doing the heavy lifting: the solar inverter. If you've ever asked ...

In 2025, the inverter market's bursting with options--high-tech microinverters, budget-friendly string models, and hybrids ready for batteries. I've scoured specs, homeowner feedback, and industry trends to bring you the top 12 ...

Module-level power electronics are devices that can be incorporated into a solar PV system to improve its performance in certain conditions (especially where shade is present) and to ...

The MPPT controller is an essential component of a solar inverter that regulates voltage and current to extract up to 30% more energy from the solar panels, especially in low ...

In 2025, the inverter market's bursting with options--high-tech microinverters, budget-friendly string models, and hybrids ready for batteries. I've scoured specs, homeowner ...

Solar panels generate Direct Current (DC) electricity. Think of DC power as raw, untamed energy--powerful but not in a format that your home can use. Your household appliances, from your TV to your toaster, all run on ...

Discover the key components of modern solar inverters, from SiC/GaN switching devices and MPPT technology to safety standards and hybrid designs. Learn how string inverters, microinverters, and hybrid systems ...

All the main parts of a solar power inverter work together to convert and manage energy effectively. These components are listed below. This is where the solar panels, which are

made of photovoltaic cells, supply the ...

Solar panels generate Direct Current (DC) electricity. Think of DC power as raw, untamed energy--powerful but not in a format that your home can use. Your household ...

In a large-scale utility plant or mid-scale community solar project, every solar panel might be attached to a single central inverter. String inverters connect a set of panels--a string--to one ...

The MPPT controller is an essential component of a solar inverter that regulates voltage and current to extract up to 30% more energy from the solar panels, especially in low light conditions.

Contact Us

For catalog requests, pricing, or partnerships, please visit:
<https://pdeozepv.pl>