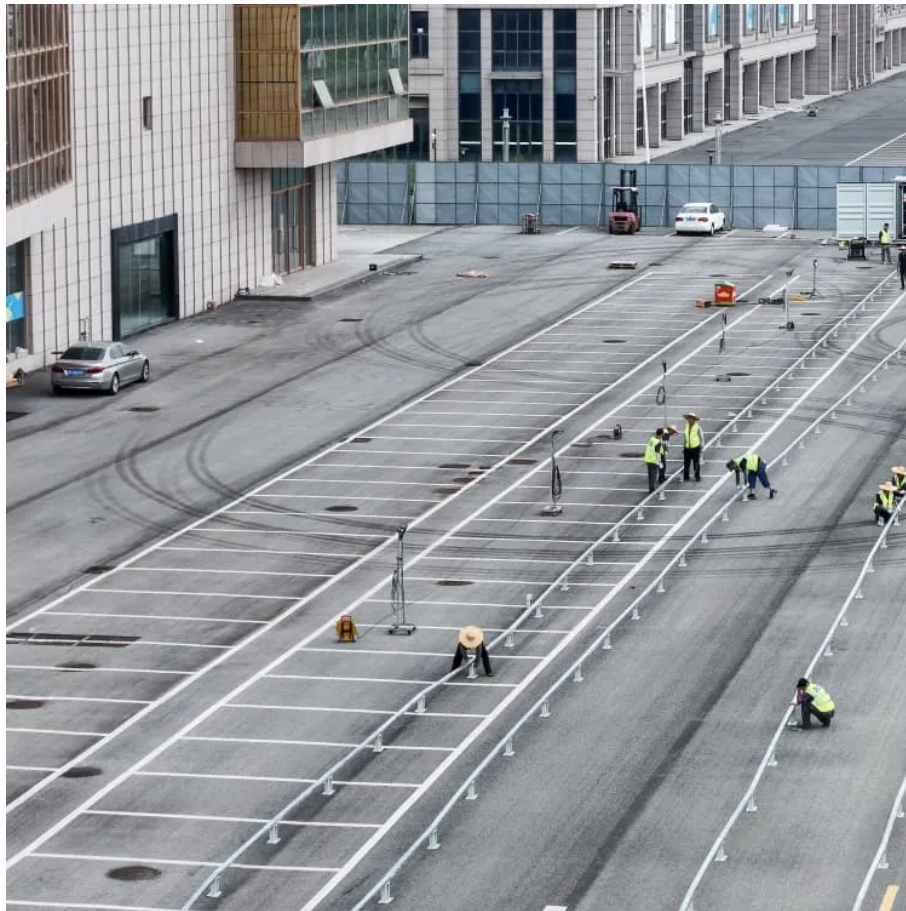


PDEOZE PowerContainer

Solar module size double glass



Overview

What is a double glass solar module?

In the ever-evolving world of photovoltaic technology, double glass solar modules are emerging as a game-changer. By encapsulating solar cells between two layers of glass, these modules offer unparalleled durability and efficiency. But what exactly sets them apart?

What are double glass solar modules?

.

What is a glass-glass solar panel?

Glass-glass module structures (Glass Glass or Double Glass) is a technology that uses a glass layer on the back of the modules instead of the traditional polymer backsheet. Originally double-glass solar panels were heavy and expensive, allowing the lighter polymer backing panels to gain most of the market share. Thanks to producers such as:

What are glass-glass PV modules?

Glass-glass PV modules, also known as double glass solar panels, are photovoltaic modules encapsulated with tempered glass on both the front and back sides. Compared to traditional glass-backsheet modules, they offer greater durability and environmental resistance.

What is a Raytech double-glass solar module?

Raytech Double-glass Solar Module: For Raytech double-glass solar modules, there are two layers of tempered glasses covering on both sides of the solar panel.

Are double-glass solar modules reactive or non-reactive?

Furthermore, comparing to plastic backsheets (the back material of single-

glass solar module) which are reactive, glass is non-reactive. This means that the whole structure of Raytech double-glass solar modules (two layers of glass and one layer of solar cells in the middle) are highly resistant to chemical reactions such as corrosion as a whole.

Why is double glass important for solar panels?

Double Glass is especially important in photovoltaic facilities such as solar power plants and with the expected long service life of modules such as AKCOME, Jinery or Jolywood. Why solar panels with glass-glassTechnology?

Why is solar double glass more durable?

Solar module size double glass

In the ever-evolving world of photovoltaic technology, double glass solar modules are emerging as a game-changer. By encapsulating solar cells between two layers of glass, these modules offer unparalleled durability and efficiency. But what exactly sets them apart? What are double glass solar modules?

Glass-glass module structures (Glass Glass or Double Glass) is a technology that uses a glass layer on the back of the modules instead of the traditional polymer backsheet. Originally double-glass solar panels were heavy and expensive, allowing the lighter polymer backing panels to gain most of the market share. Thanks to producers such as:

Glass-glass PV modules, also known as double glass solar panels, are photovoltaic modules encapsulated with tempered glass on both the front and back sides. Compared to traditional glass-backsheet modules, they offer greater durability and environmental resistance.

Raytech Double-glass Solar Module: For Raytech double-glass solar modules, there are two layers of tempered glasses covering on both sides of the solar panel.

Furthermore, comparing to plastic backsheets (the back material of single-glass solar module) which are reactive, glass is non-reactive. This means that the whole structure of Raytech double-glass solar modules (two layers of glass and one layer of solar cells in the middle) are highly resistant to chemical reactions such as corrosion as a whole.

Double Glass is especially important in photovoltaic facilities such as solar power plants and with the expected long service life of modules such as AKCOME, Jinery or Jolywood. Why solar panels with glass-glassTechnology? Why is solar double glass more durable?

Feb 21, 2025 · In the ever-evolving world of photovoltaic technology, double glass solar modules are emerging as a game-changer. By encapsulating solar cells between two layers of glass, these modules offer unparalleled ...

Mar 12, 2024 · The whole structure is held in place with an aluminum framing structure which provides strength against accidents and mishandlings during installation. Raytech Double-glass Solar Module: For Raytech double ...

What Are Glass-Glass PV Modules? Glass-glass PV modules, also known as double glass solar panels, are photovoltaic modules encapsulated with tempered glass on both the front and ...

Feb 21, 2025 · In the ever-evolving world of photovoltaic technology, double glass solar modules are emerging as a game-changer. By encapsulating solar cells between two layers of glass, ...

Double glass modules use an innovative design with glass on both sides, offering higher photovoltaic conversion efficiency and better environmental characteristics.

What Is The Distinction Between Single and Double Glass Solar Panels? What Are Double Glass Mono Perc Solar Panels? What Are Double Glass Solar Panel Advantages? Typically, solar panels have a front glass panel and a back plastic sheet. These single-sided glass panels are supported by frames across the entire construction. Manufacturers have developed double glass solar panels in recent years. Instead of a plastic back sheet, these panels have a second layer of glass on the back. The double glass solar pane See more on energytheory Coulee Limited

Mar 5, 2025 · Compare double glass solar panel thickness configurations for international projects. Includes custom small-format options under 200W for specialized global applications.

What Are Glass-Glass PV Modules? Glass-glass PV modules, also known as double glass

solar panels, are photovoltaic modules encapsulated with tempered glass on both the front and back sides. Compared to traditional ...

Oct 2, 2024 · Left: a double-glass module; right, a bifacial single-glass module. The wave of industrial consolidation is growing ever more pronounced, shaping the landscape with each ...

The thickness of the front glass generally used for this type of structure is 3.2 mm. Dual-glass type modules (also called double glass or glass-glass) are made up of two glass surfaces, on the

In windy areas, compared to the Model 210 PV Modules, the Full-Screen Double-Glass PV Modules have lower risks of falling apart due to smaller size and weight has been tested to ...

Mar 12, 2024 · The whole structure is held in place with an aluminum framing structure which provides strength against accidents and mishandlings during installation. Raytech Double ...

Double glass modules use an innovative design with glass on both sides, offering higher photovoltaic conversion efficiency and better environmental characteristics.

Double glass solar panels Double-glazed modules are characterized by increased reliability, especially for large-scale photovoltaic projects. They include better resistance to higher temperatures, humidity and UV ...

Mar 5, 2025 · Compare double glass solar panel thickness configurations for international projects. Includes custom small-format options under 200W for specialized global applications.

Nov 17, 2023 · What are Double Glass Solar Panels: In double glass solar panels, glass is

put on both the sides of the solar panel.

Oct 2, 2024 · Left: a double-glass module; right, a bifacial single-glass module. The wave of industrial consolidation is growing ever more pronounced, shaping the landscape with each passing day.

Double glass solar panels Double-glazed modules are characterized by increased reliability, especially for large-scale photovoltaic projects. They include better resistance to higher ...

Contact Us

For catalog requests, pricing, or partnerships, please visit:
<https://pdeozepv.pl>