

## PDEOZE PowerContainer

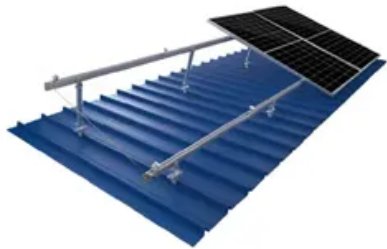
# Solar panels directly drive inverters



TILE ROOF SOLAR MOUNTING SYATEM



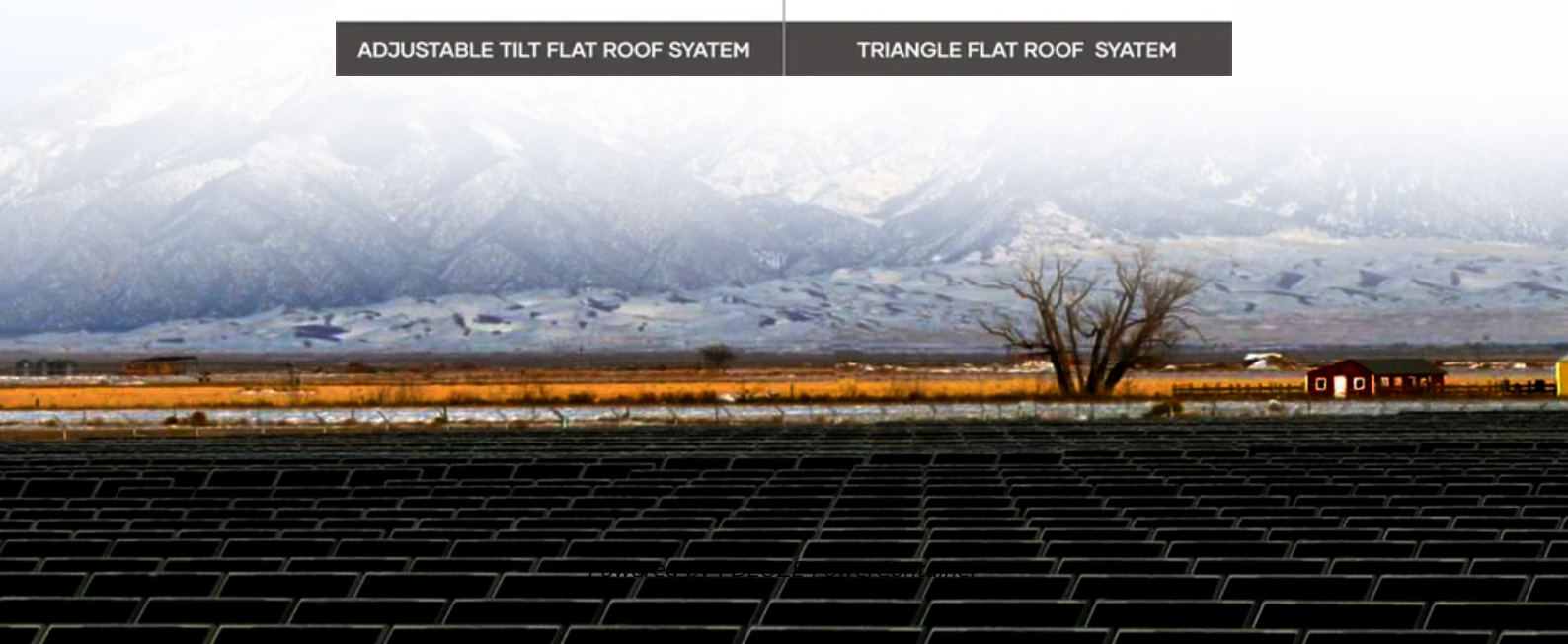
STANDING SEAM ROOF SYATEM



ADJUSTABLE TILT FLAT ROOF SYATEM



TRIANGLE FLAT ROOF SYATEM



## Overview

---

**Direct Connection:** It is technically possible to connect an inverter directly to a solar panel, but it is not recommended without proper system design. **Voltage Compatibility:** Ensure the inverter's input voltage range matches the output voltage of the solar panel for safe operation.

**Direct Connection:** It is technically possible to connect an inverter directly to a solar panel, but it is not recommended without proper system design. **Voltage Compatibility:** Ensure the inverter's input voltage range matches the output voltage of the solar panel for safe operation.

It's appealing to just connect solar panels directly to an inverter, and bypass the safer and more expensive charge controller. Solar panels produce a type of electricity called direct current (DC), and most homes and the power grid run on a form known as alternating current (AC). And that's what.

**Inverter Purpose:** An inverter converts DC electricity generated by solar panels into AC electricity for household use. **Direct Connection:** It is technically possible to connect an inverter directly to a solar panel, but it is not recommended without proper system design. **Voltage Compatibility:**

Well, technically speaking you can absolutely connect an inverter directly to a solar panel but there are drawbacks and issues you need to be aware of. Of course, if you're using a grid-tie inverter for your home then no batteries are needed as excess energy is sent to the mains grid. Plus when.

An inverter changes the DC electricity from solar panels into AC electricity. This is the type most home appliances use. By doing this, you can run your appliances more effectively. You'll also cut your electricity costs. Plus, an inverter keeps an eye on your solar system's performance. It adjusts.

Solar panels by themselves produce direct current (DC) under sunlight. Direct current can power lights or a fridge but it's not suitable for sensitive electronics like laptops or TVs. That's why you'll need a solar inverter to convert direct current to alternating (AC). An off-grid inverter has a.

It is possible to directly connect solar panels to an inverter without a charge controller. However, using a high-quality solar power inverter that can fulfil various functions is important. The solar power inverter is crucial in connecting solar panels to the battery and the grid. The inverter.

## Solar panels directly drive inverters

---

This guide explains how to connect solar panels to an inverter safely and effectively. We'll also discuss factors like inverter capacity to help you determine how many ...

If the inverter is designed for direct solar input (as in hybrid or grid-tie inverters), you can connect the solar panel directly to the inverter, provided the voltage and current ...

Wondering if you can run an inverter directly from a solar panel without a battery. Here's how you can do it correctly.

Can I connect solar panels directly to an inverter? Learn how to wire solar panels to inverters properly for grid-tied and off-grid photovoltaic systems.

Solar panels can be plugged directly into an inverter input. In a grid tied system, the solar panels and inverter do not need a battery because power can be transmitted and sent to the grid.

When it comes to harnessing solar energy, connecting solar panels to an inverter is a crucial step. But can you connect solar panels directly to an inverter? In this article, we will ...

In this post, we'll explore the compatibility of inverters with solar panels, discuss the types of inverters available, and guide you on how to safely set up your solar energy ...

In this post, we'll explore the compatibility of inverters with solar panels, discuss the types of inverters available, and guide you on how to safely set up your solar energy system for optimal performance.

Can I connect solar panels directly to an inverter? Learn how to wire solar panels to inverters properly for grid-tied and off-grid photovoltaic systems.

In this guide, I will walk you through a step-by-step process to seamlessly connect your solar panels to an inverter, enabling you to fully enjoy the benefits of solar energy while contributing ...

Connecting an inverter directly to a solar panel is theoretically possible, but it may not be practical in most cases. The input tolerances of inverters are generally narrow, which means they can't ...

While it's technically possible to connect solar panels directly to an inverter, it's not always the safest or most efficient choice. Using a charge controller, proper wiring, and ...

All Shipments Are Insured · 4.6 Overall Star Rating

## Contact Us

---

For catalog requests, pricing, or partnerships, please visit:  
<https://pdeozepv.pl>