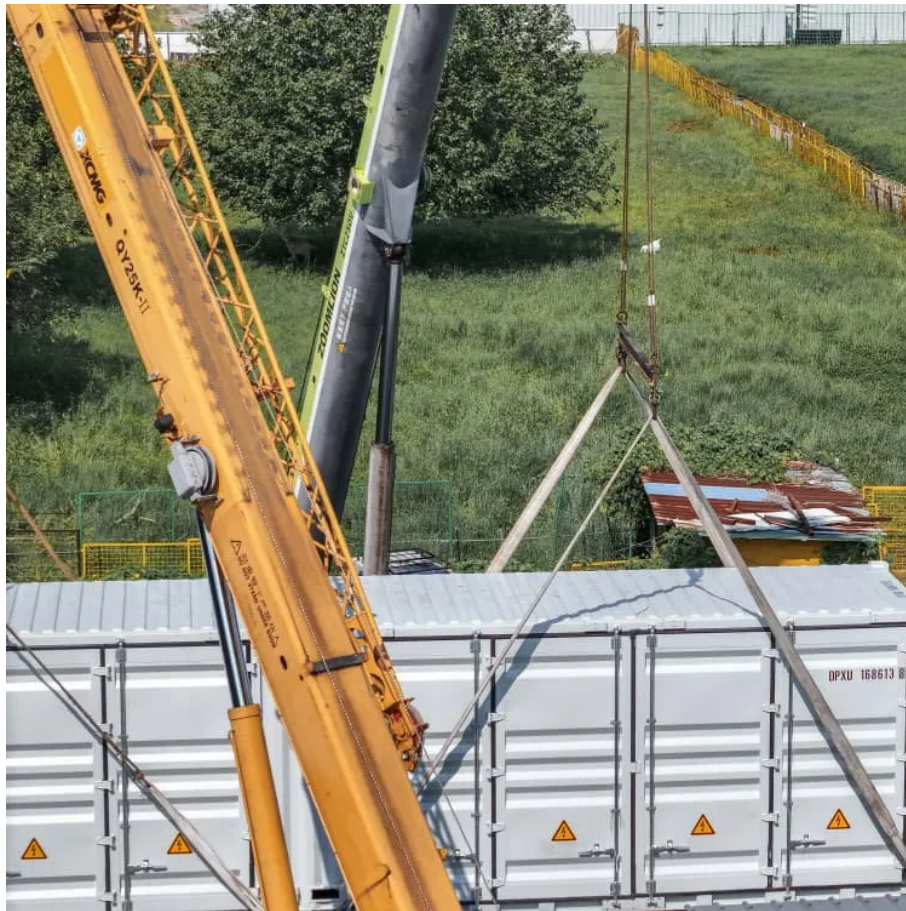


## PDEOZE PowerContainer

# Solar polycrystalline panel size



## Overview

---

Polycrystalline Solar Panels have typical heights of 64", 76.5" (163, 194 cm), widths of 39", 51.5" (99, 131 cm), and depths between 1.2"-2" (3-5 cm). Solar cell sizes are 6" x 6" (15 x 15 cm).

Polycrystalline Solar Panels have typical heights of 64", 76.5" (163, 194 cm), widths of 39", 51.5" (99, 131 cm), and depths between 1.2"-2" (3-5 cm). Solar cell sizes are 6" x 6" (15 x 15 cm).

Polycrystalline solar panels come in a variety of sizes, with the most common being 65 inches by 39 inches. However, the size can vary depending on the specific power output and application, with larger panels used for commercial or utility-scale installations.

Most polycrystalline panels follow industry-standard sizing to ensure compatibility with mounting systems and inverters. A typical 60-cell module measures approximately **1.0 meters (39 inches) in width** and **1.6 meters (65 inches) in length**, weighing around **18-23 kilograms (40-50 pounds)**.

### What is Polycrystalline Solar Panel Size?

Poly-Si/multi-Si cells are typically 6 inches (15.24 centimeters) in size. They look grainier and have a bluer coating than mono-Si cells because of the cell's defective crystal structure.

In comparison, polycrystalline panels are slightly larger and less efficient than monocrystalline panels, typically sized around 66 x 40 inches. They offer a more cost-effective solution, but their lower efficiency means you might need more panels to achieve the same energy output.

## Solar polycrystalline panel size

---

Get expert advice on selecting the perfect polycrystalline solar panel size for your system. Comprehensive guide to aid your solar transformation.

Polycrystalline Solar Panels are manufactured in 60, 72, and 96 cell configurations with a solar efficiency between 14-17%. Polycrystalline Solar Panels have typical heights of ...

Using a solar panel size chart can help you choose the best types of solar panels for your home or application. Because the size of a standard solar panel can vary, a chart that ...

To bridge that gap of very useful knowledge needed, we have compared and averaged the sizes of 100-watt to 500-watt solar panels available on the market. The goal here is to get to the ...

In this comprehensive guide, you'll learn everything you need to know about solar panel sizing, from standard dimensions to weight considerations, helping you determine the ...

Specifically, polycrystalline solar panels are available in a variety of sizes, with the most common being 65x39 inches or 66x40 inches, with 1.5 inches thickness corresponding to a 60-cell panel layout for ...

Different types of solar panels, including monocrystalline, polycrystalline, and thin-film, come in various sizes that suit different applications and installation environments. Understanding ...

What are Some Polycrystalline Solar Panel Specifications? You might also be thinking about the possibility of installing a solar energy system on the top of your home.

Polycrystalline Solar Panels are manufactured in 60, 72, and 96 cell configurations with a solar efficiency between 14-17%. Polycrystalline Solar Panels have typical heights of 64", 76.5" (163, 194 cm), widths of ...

Before installation, you can expect to pay anywhere from \$0.90 to \$1 per watt for polycrystalline solar panels. However, this price varies based on several factors, such as your ...

Specifically, polycrystalline solar panels are available in a variety of sizes, with the most common being 65x39 inches or 66x40 inches, with 1.5 inches thickness corresponding to ...

What Are Polycrystalline Solar Panel Applications?What Are Specifications For A 72 Cell Polycrystalline Solar PV Module?What Is Polycrystalline Solar Panel Size?How Do Polycrystalline Solar Panels Work?What Is Polycrystalline Solar Panel Average Price range?What Is Polycrystalline Solar Panel Wattage?The differences between monocrystalline and polycrystalline solar cells are minimal in this context. Both are offered in a broad range of output powers that are separated based on their respective efficiency. You have a choice of solar panel sizes ranging from 50 to 400 watts, with polycrystalline panels having an efficacy range of 13-17%and monocr See more on energytheory

Different types of solar panels, including monocrystalline, polycrystalline, and thin-film, come in various sizes that suit different applications and installation environments. Understanding ...

To bridge that gap of very useful knowledge needed, we have compared and averaged the sizes of 100-watt to 500-watt solar panels available on the market. The goal here is to get to the average solar panel size by wattage.

Most polycrystalline panels follow industry-standard sizing to ensure compatibility with mounting systems and inverters. A typical 60-cell module measures approximately \*\*1.0

meters (39 ...

Get expert advice on selecting the perfect polycrystalline solar panel size for your system. Comprehensive guide to aid your solar transformation.

## Contact Us

---

For catalog requests, pricing, or partnerships, please visit:  
<https://pdeozepv.pl>