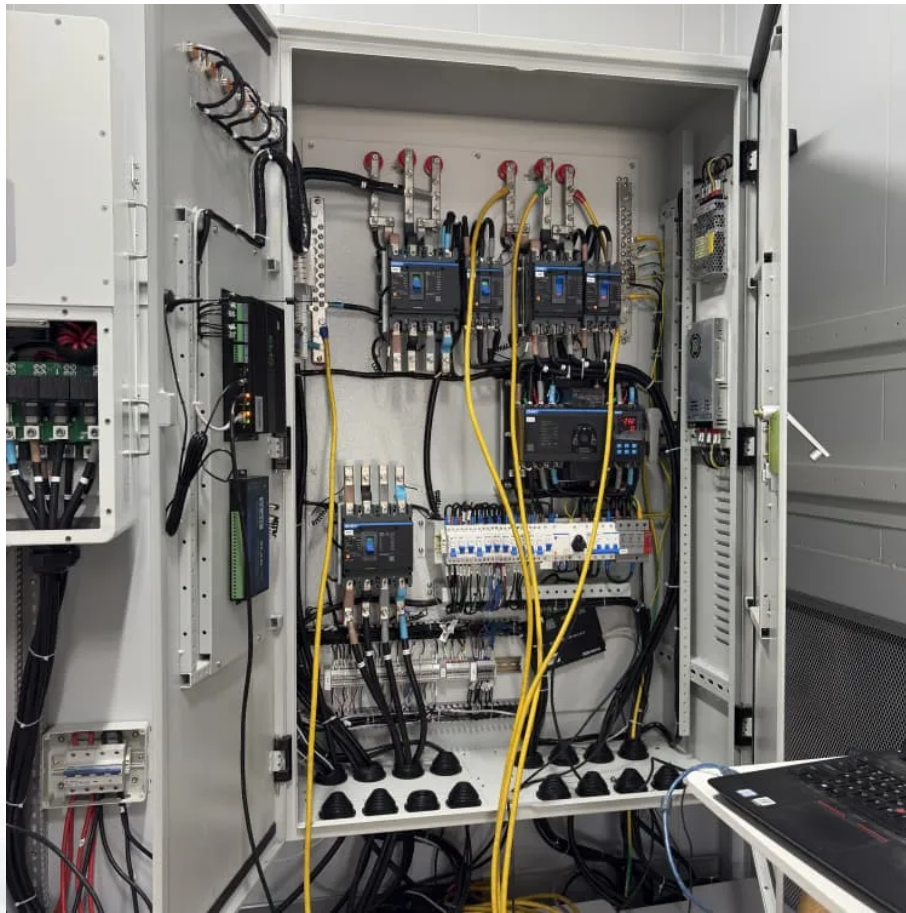


PDEOZE PowerContainer

Superconducting magnetic energy storage conversion efficiency



Overview

The energy density, efficiency and the high discharge rate make SMES useful systems to incorporate into modern energy grids and green energy initiatives. The SMES system's uses can be categorized into three categories: power supply systems, control systems and emergency/contingency systems. FACTS

This paper provides a clear and concise review on the use of superconducting magnetic energy storage (SMES) systems for renewable energy applications with the attendant challenges and future research direction.

This paper provides a clear and concise review on the use of superconducting magnetic energy storage (SMES) systems for renewable energy applications with the attendant challenges and future research direction.

Superconducting magnetic energy storage (SMES) systems store energy in the magnetic field created by the flow of direct current in a superconducting coil that has been cryogenically cooled to a temperature below its superconducting critical temperature. This use of superconducting coils to store.

In this paper, we will deeply explore the working principle of superconducting magnetic energy storage, advantages and disadvantages, practical application scenarios and future development prospects. Superconducting magnetic energy storage technology converts electrical energy into magnetic field.

Superconducting Magnetic Energy Storage (SMES) is an innovative system that employs superconducting coils to store electrical energy directly as electromagnetic energy, which can then be released back into the grid or other loads as needed. Here, we explore its working principles, advantages and.

Superconducting Magnet Energy Storage (SMES) systems are utilized in various applications, such as instantaneous voltage drop compensation and dampening low-frequency oscillations in electrical power systems. Numerous SMES projects have been completed worldwide, with many still ongoing. This.

Magnetic Energy Storage (SMES) is a highly efficient technology for storing

power in a magnetic field created by the flow of direct current through a superconducting coil. SMES has fast energy response times, high efficiency, and many charge-discharge cycles. These qualities make SMES a good.

Superconducting Magnetic Energy Storage (SMES) is increasingly recognized as a significant advancement in the field of energy systems, offering a unique combination of efficiency and reliability. Discover how SMES can revolutionize energy storage! This article delves into the fundamental principles.

Superconducting magnetic energy storage conversion efficiency

SMES loses the least amount of electricity in the energy storage process compared to other methods of storing energy. SMES systems are highly efficient; the round-trip efficiency is ...

Operationally, SMES is different from other storage technologies in that a continuously circulating current within the superconducting coil produces the stored energy. In addition, the only conversion process in the SMES ...

This paper covers the fundamental concepts of SMES, its advantages over conventional energy storage systems, its comparison with other energy storage technologies, and some technical ...

SMES systems demonstrate exceptional performance in converting energy with minimal losses. This significantly enhances their operational effectiveness across various applications.

Superconducting magnetic energy storage technology converts electrical energy into magnetic field energy efficiently and stores it through superconducting coils and converters, with ...

Abstract: A novel power conversion system (PCS) topology for superconducting magnetic energy storage (SMES) to deliver the required pulses for large, pulsed loads, such ...

Explore Superconducting Magnetic Energy Storage (SMES): its principles, benefits, challenges, and applications in revolutionizing energy storage with high efficiency.

Superconductors have zero joule loss below their critical temperature, allowing SMES to save energy without any loss. Additionally, since there is no mechanical conversion when supplying energy, SMES ...

This paper provides a clear and concise review on the use of superconducting magnetic energy storage (SMES) systems for renewable energy applications with the ...

Explore how superconducting magnetic energy storage (SMES) and superconducting flywheels work, their applications in grid stability, and why they could be key to efficient, low-loss clean energy ...

Superconducting magnetic energy storage technology converts electrical energy into magnetic field energy efficiently and stores it through superconducting coils and ...

Overview Applications Advantages over other energy storage methods Current use System architecture Working principle Solenoid versus toroid Low-temperature versus high-temperature superconductors

The energy density, efficiency and the high discharge rate make SMES useful systems to incorporate into modern energy grids and green energy initiatives. The SMES system's uses can be categorized into three categories: power supply systems, control systems and emergency/contingency systems. FACTS

SMES systems demonstrate exceptional performance in converting energy with minimal losses. This significantly enhances their operational effectiveness across various ...

Superconductors have zero joule loss below their critical temperature, allowing SMES to save energy without any loss. Additionally, since there is no mechanical conversion ...

Explore how superconducting magnetic energy storage (SMES) and superconducting flywheels work, their applications in grid stability, and why they could be key ...

Operationally, SMES is different from other storage technologies in that a continuously circulating current within the superconducting coil produces the stored energy. In addition, the only ...

Contact Us

For catalog requests, pricing, or partnerships, please visit:
<https://pdeozepv.pl>