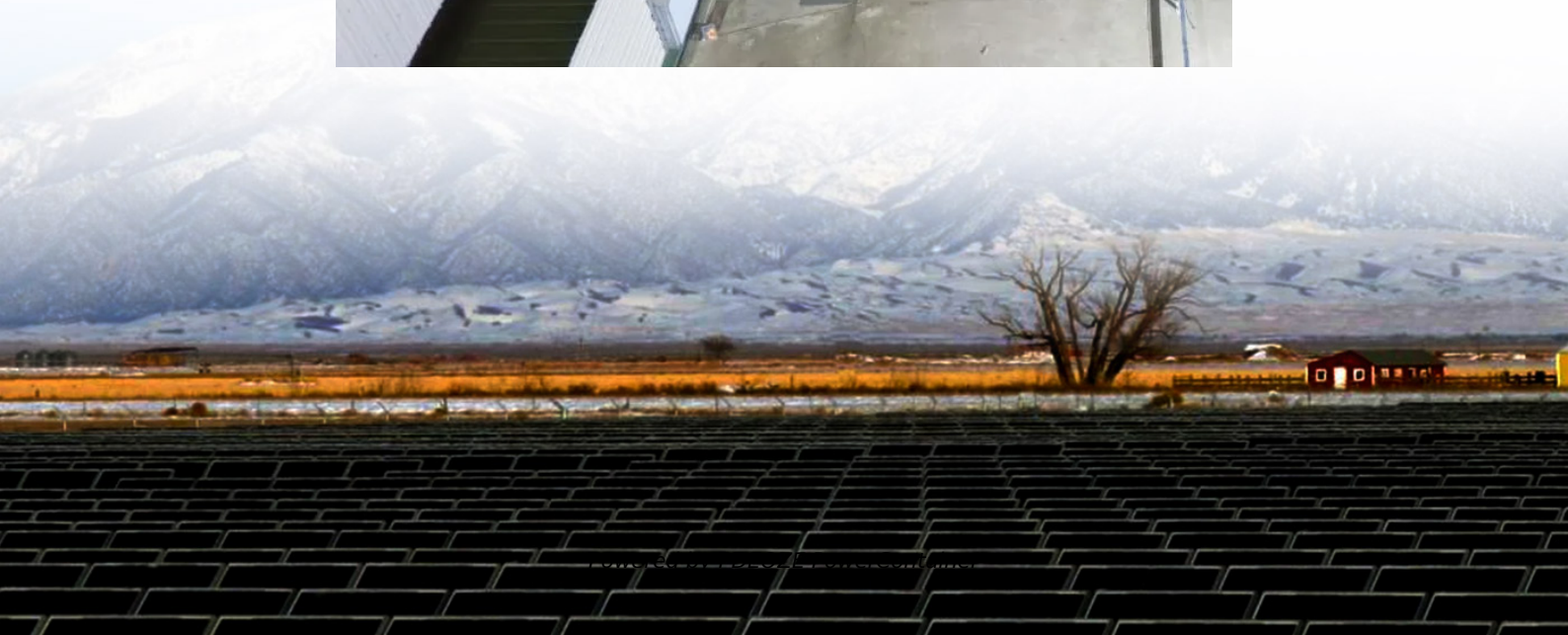
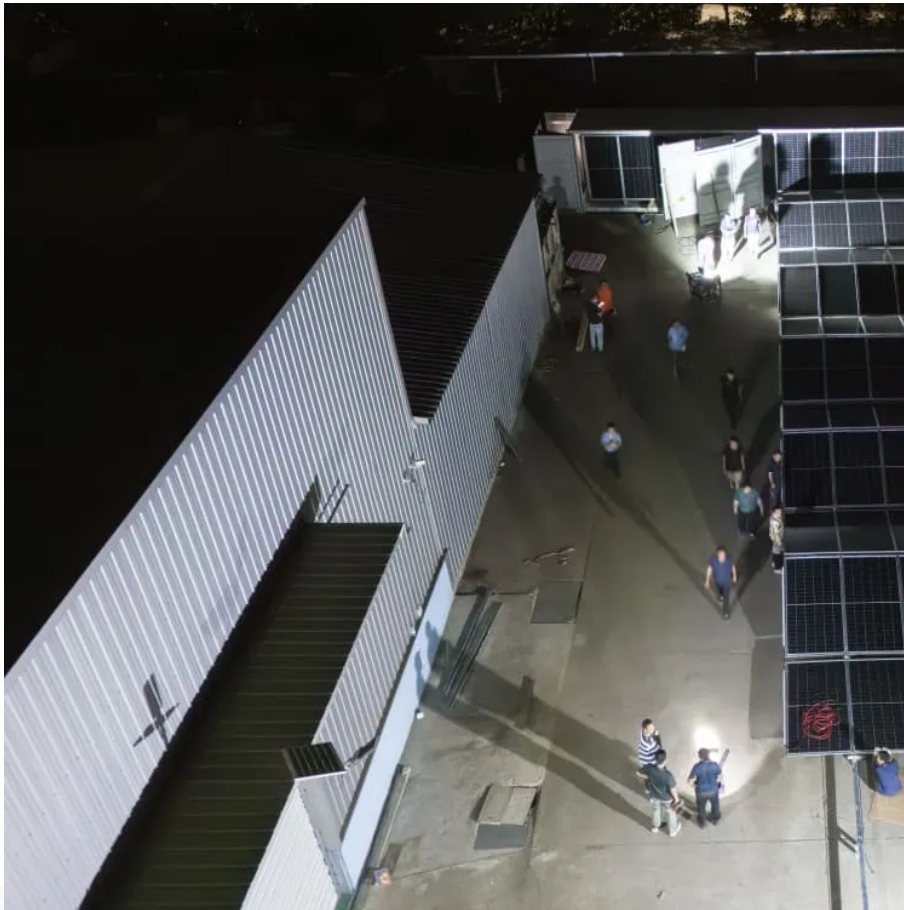


PDEOZE PowerContainer

What is the power supply for communication base stations



Overview

What are the components of a base station?

Power Supply: The power source provides the electrical energy to base station elements. It often features auxiliary power supply mechanisms that guarantee operation in case of lost or interrupted electricity, during blackouts. **Baseband Processor:** The baseband processor is responsible for the processing of the digital signals.

What is a telecom power supply?

Unlike standard power systems, telecom power supplies are engineered to handle the unique requirements of telecommunication systems. They must provide stable voltage, protect against power surges, and offer backup solutions during outages. These systems often include components such as rectifiers, inverters, and batteries.

Why are telecom power supply systems important?

In a world that demands constant connectivity, telecom power supply systems remain indispensable. Telecom power supply systems are essential for ensuring uninterrupted communication, providing reliable energy to telecommunication networks even during outages.

Why are base stations important in cellular communication?

Base stations are important in the cellular communication as it facilitate seamless communication between mobile devices and the network communication. The demand for efficient data transmission are increased as we are advancing towards new technologies such as 5G and other data intensive applications.

Why do we need a base station?

Technological advancements: The New technologies result in evolved base stations that support upgrades and enhancements such as 4G, 5G and

beyond, its providing faster speeds with better bandwidth. Emergency services: They provide access to emergency services, so that in case of emergency, people can call through their mobile phones.

How does a base station work?

It usually connects the device to other networks or devices through a dedicated high bandwidth wire of fiber optic connection. Base stations typically have a transceiver, capable of sending and receiving wireless signals; Otherwise if they only send the trailer it will be considered a transmitter or broadcast point only.

What is the power supply for communication base stations

Power Supply: The power source provides the electrical energy to base station elements. It often features auxiliary power supply mechanisms that guarantee operation in case of lost or interrupted electricity, during blackouts. **Baseband Processor:** The baseband processor is responsible for the processing of the digital signals.

Unlike standard power systems, telecom power supplies are engineered to handle the unique requirements of telecommunication systems. They must provide stable voltage, protect against power surges, and offer backup solutions during outages. These systems often include components such as rectifiers, inverters, and batteries.

In a world that demands constant connectivity, telecom power supply systems remain indispensable. Telecom power supply systems are essential for ensuring uninterrupted communication, providing reliable energy to telecommunication networks even during outages.

Base stations are important in the cellular communication as it facilitate seamless communication between mobile devices and the network communication. The demand for efficient data transmission are increased as we are advancing towards new technologies such as 5G and other data intensive applications.

Technological advancements: The New technologies result in evolved base stations that support upgrades and enhancements such as 4G, 5G and beyond, its providing faster speeds with better bandwidth. **Emergency services:** They provide access to emergency services, so that in case of emergency, people can call through their mobile phones.

It usually connects the device to other networks or devices through a dedicated high bandwidth wire of fiber optic connection. Base stations typically have a transceiver,

capable of sending and receiving wireless signals; Otherwise if they only send the trailer it will be considered a transmitter or broadcast point only.

Dec 27, 2024 · Understand telecom power supply systems, their components, and their role in ensuring uninterrupted communication and reliable network operations.

May 25, 2023 · The UPS power supply for base stations, as a vital component of the communication power system, is extensively used in the communication industry. The safe ...

Mar 1, 2024 · A backup power supply for communication base stations is crucial for ensuring uninterrupted communication services, especially during power outages or emergencies.

Jul 23, 2025 · Power consumption: Thus, permanent power supply is needed for the operation of base stations; energy consumption required to operate these facilities contributes significantly ...

Feb 10, 2025 · Lead-acid batteries: "Backup power station" for telecom base stations Backup power supply for communication base stations, including UPS power supply is a battery pack consisting of several parallel ...

Jul 23, 2025 · Power consumption: Thus, permanent power supply is needed for the operation of base stations; energy consumption required to operate these facilities contributes significantly to carbon emissions and ...

Feb 10, 2025 · Lead-acid batteries: "Backup power station" for telecom base stations Backup power supply for communication base stations, including UPS power supply is a battery pack ...

Sep 12, 2025 · Discover how AC DC switching power supplies drive stable, efficient, and

compact power solutions for telecom base stations, routers, and 5G networks--ensuring reliable connectivity worldwide.

With the explosive construction of 5G base stations, the demand for lithium iron phosphate energy storage batteries is expected to increase significantly. Because the overall power consumption of 5G base stations is 2.5-3.5 ...

In particular, MORNSUN can provide specific power supply solutions for optical communication and 5G base stations applications. In particular, MORNSUN's VCB/VCF series of isolated 3 ...

Feb 20, 2025 · Telecom batteries for base stations are backup power systems using valve-regulated lead-acid (VRLA) or lithium-ion batteries. They ensure uninterrupted connectivity ...

With the explosive construction of 5G base stations, the demand for lithium iron phosphate energy storage batteries is expected to increase significantly. Because the overall power consumption ...

Dec 27, 2024 · Understand telecom power supply systems, their components, and their role in ensuring uninterrupted communication and reliable network operations.

The Telecom Base Station Intelligent Grid-PV Hybrid Power Supply System helps telecom operators to achieve "carbon reduction, energy saving" for telecom base stations and machine ...

Sep 12, 2025 · Discover how AC DC switching power supplies drive stable, efficient, and compact power solutions for telecom base stations, routers, and 5G networks--ensuring reliable ...

Contact Us

For catalog requests, pricing, or partnerships, please visit:
<https://pdeozepv.pl>