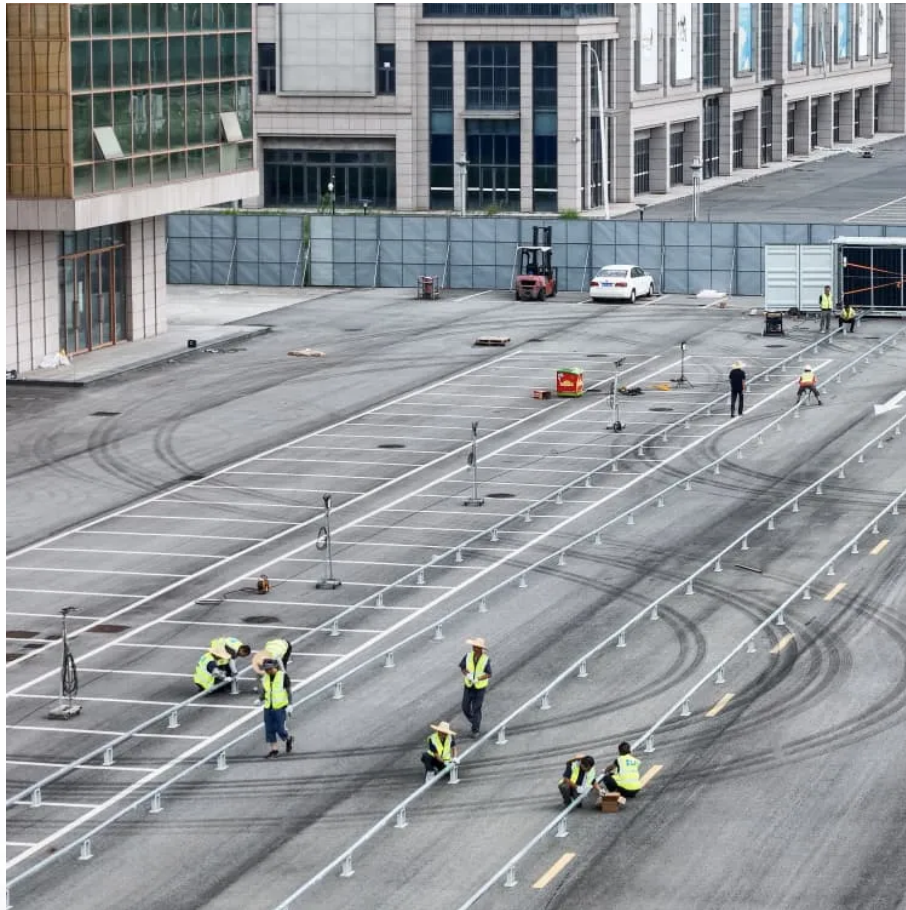


PDEOZE PowerContainer

What s inside a base station communication device



Overview

A BTS is usually composed of: Transceiver (TRX) Provides transmission and reception of signals. It also does sending and reception of signals to and from higher network entities (like the base station controller in mobile telephony). This can be separated into a dedicated device known as a Remote radio head (RRH). Power amplifier (PA) Amplifies the signal from TRX for transmission through antenna; may be in.

The internal components of a base station include an antenna system, transceiver units, and control equipment. Antennas are mounted at height to ensure adequate coverage.

The internal components of a base station include an antenna system, transceiver units, and control equipment. Antennas are mounted at height to ensure adequate coverage.

They are communication hubs in a cellular network that ensure continuous service as users move throughout a geographical area. What is a Base Station?

A base station is a fixed transceiver that serves as the central communication point for mobile devices within a defined geographical area, known as.

The present-day tele-space is incomplete without the base stations as these constitute an important part of the modern-day scheme of wireless communications. They are referred to as cell towers or cellular antennas. These types of objects are an inevitability since they serve the purpose of.

At its core, a BTS is the equipment that facilitates wireless communication between the mobile network and your phone. This piece of technology is the backbone of mobile communication, allowing us to make calls, send texts, and access the internet seamlessly. In this article, we will delve into the.

A base transceiver station (BTS) or a baseband unit[1] (BBU) is a piece of equipment that facilitates wireless communication between user equipment (UE) and a network. UEs are devices like mobile phones (handsets), WLL phones, computers with wireless Internet connectivity, or antennas mounted on.

From making a phone call in a busy city to streaming videos in remote villages, the ability to stay connected relies on one critical piece of infrastructure: the telecom base station. Often hidden in plain sight on rooftops or towers, base stations are the backbone of modern mobile networks. What.

A base station plays a pivotal role in the realm of telecommunications, acting as the cornerstone of connectivity. It enables seamless communication by linking various wireless devices to broader networks, ensuring that data flows efficiently from one point to another. A base station is an integral.

What s inside a base station communication device

A base station is a piece of equipment that facilitates wireless communication between devices and a network. It contains the necessary hardware and software to transmit ...

Provides transmission and reception of signals. It also does sending and reception of signals to and from higher network entities (like the base station controller in mobile telephony). This can ...

A base station is a fixed transceiver that serves as the central communication point for mobile devices within a defined geographical area, known as a cell. It is sometimes called ...

A base station receives signals from mobile devices within its coverage area, and forwards these signals to the network's central system. It converts the received radio waves into digital data, ...

The present-day tele-space is incomplete without the base stations as these constitute an important part of the modern-day scheme of wireless communications. They are referred to as cell towers or cellular ...

The present-day tele-space is incomplete without the base stations as these constitute an important part of the modern-day scheme of wireless communications. They are ...

In wireless communication, a base station is a critical component that enables wireless communication between devices. It serves as a central point of connection for ...

A base station receives signals from mobile devices within its coverage area, and

forwards these signals to the network's central system. It converts the received radio ...

A base station serves as a central connection point for a wireless device to communicate. It further connects the device to other ...

A BTS is usually composed of: Transceiver (TRX) Provides transmission and reception of signals. It also does sending and reception of signals to and from higher network entities (like the base station controller in mobile telephony). This can be separated into a dedicated device known as a Remote radio head (RRH). Power amplifier (PA) Amplifies the signal from TRX for transmission through antenna; may be in...

A base station is a fixed point of communication between mobile devices and the wider telecom network. It transmits and receives radio signals, enabling your phone to access ...

Base stations are critical components in wireless communication networks, serving as the intermediary between mobile devices and the core network. They play a vital role in ...

A base station serves as a central connection point for a wireless device to communicate. It further connects the device to other networks or devices, usually through ...

A base station is a piece of equipment that facilitates wireless communication between devices and a network. It contains the necessary hardware and software to transmit and receive signals from devices such ...

The base station itself consists of antennas, transceivers, a baseband unit (BBU) that handles the digital processing of radio signals, ...

The base station itself consists of antennas, transceivers, a baseband unit (BBU) that

handles the digital processing of radio signals, and other hardware that process the signals.

Contact Us

For catalog requests, pricing, or partnerships, please visit:
<https://pdeozepv.pl>